

**GRAZ Engineering, L.L.C.**

323 West Lake Road, Fitzwilliam, NH 03447  
Phone: (603) 595-6959 Fax: (603) 595-6960

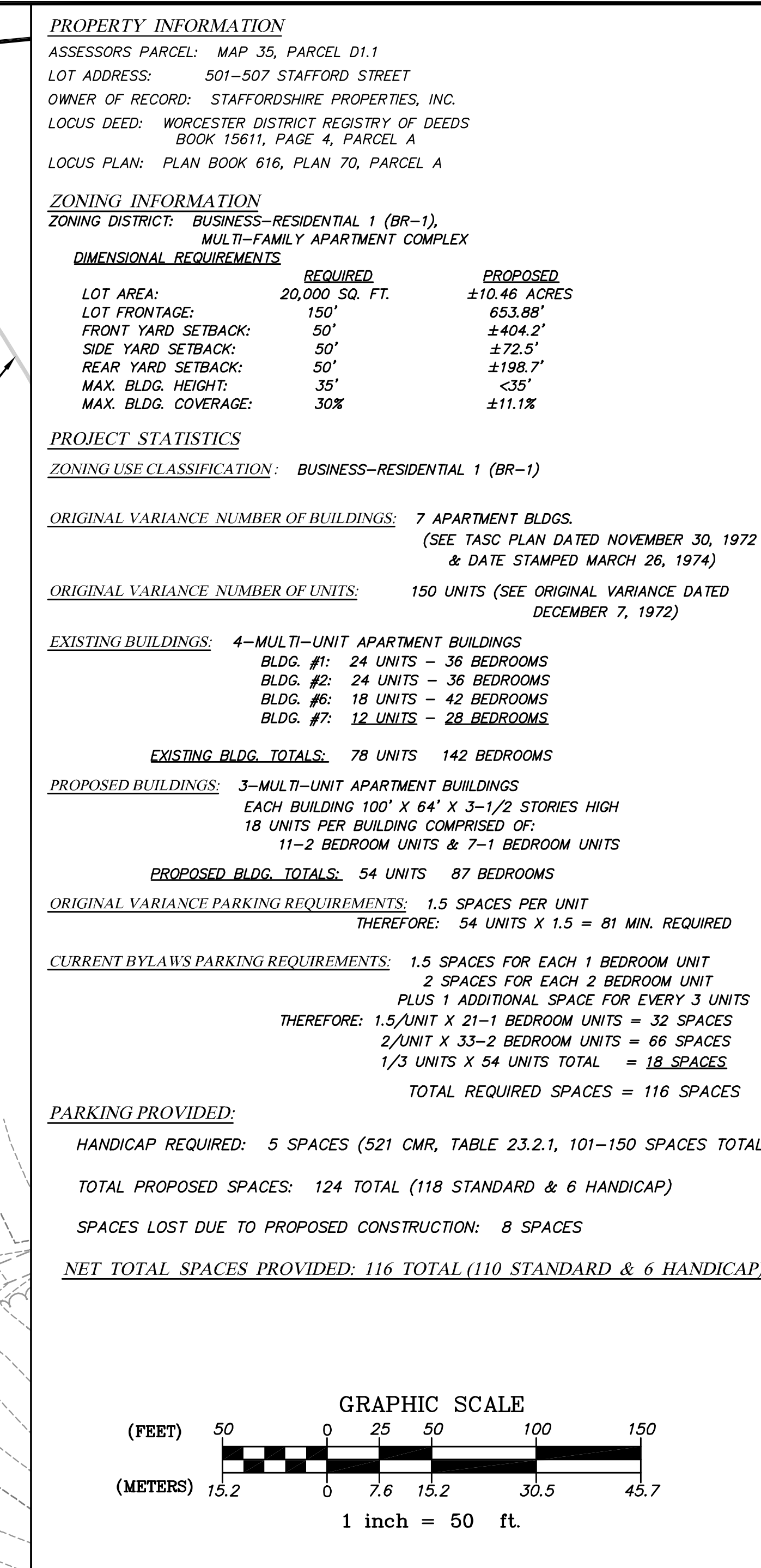
STAFFORDSHIRE PROPERTIES, 501-507 STAFFORD STREET  
LEICESTER, MASSACHUSETTS

PROPOSED SITE PLAN OVERLAYED WITH ORIGINAL PLAN  
PREPARED FOR: STAFFORDSHIRE PROPERTIES, INC.  
503 STAFFORD STREET, LEICESTER, MA

| SCALE       | AS NOTED    | DATE        | BY          |
|-------------|-------------|-------------|-------------|
| DATE        | DATE        | DATE        | DATE        |
| REV.        | REV.        | REV.        | REV.        |
| DESCRIPTION | DESCRIPTION | DESCRIPTION | DESCRIPTION |







$\Delta = 52'06.01''$   
 $R = 70.00'$   
 $L = 63.65'$

34-D1.2  
 N/F  
 SOUTHWEST HOLDINGS, LTD.  
 DB 28790, PG 86, PORTION OF  
 PARCEL A  
 PB 616, PL 70  
 PORTION OF PARCEL B

PROPOSED  
 ACCESS DRIVE

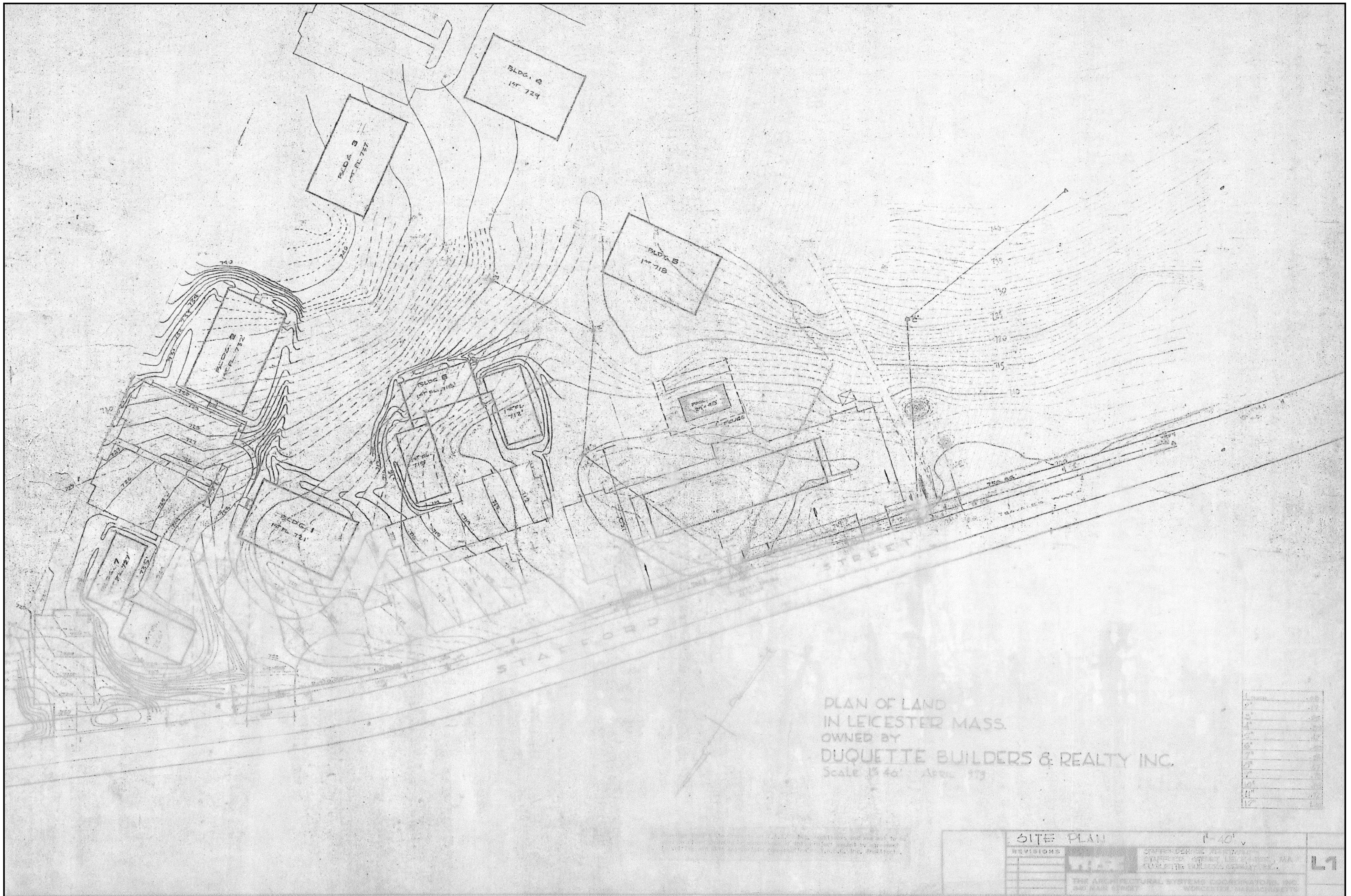
GRAVEL  
 PARKING

119.28'  
 32'  
 66.28'  
 49'47.55" W  
 104.72'  
 63'4" W

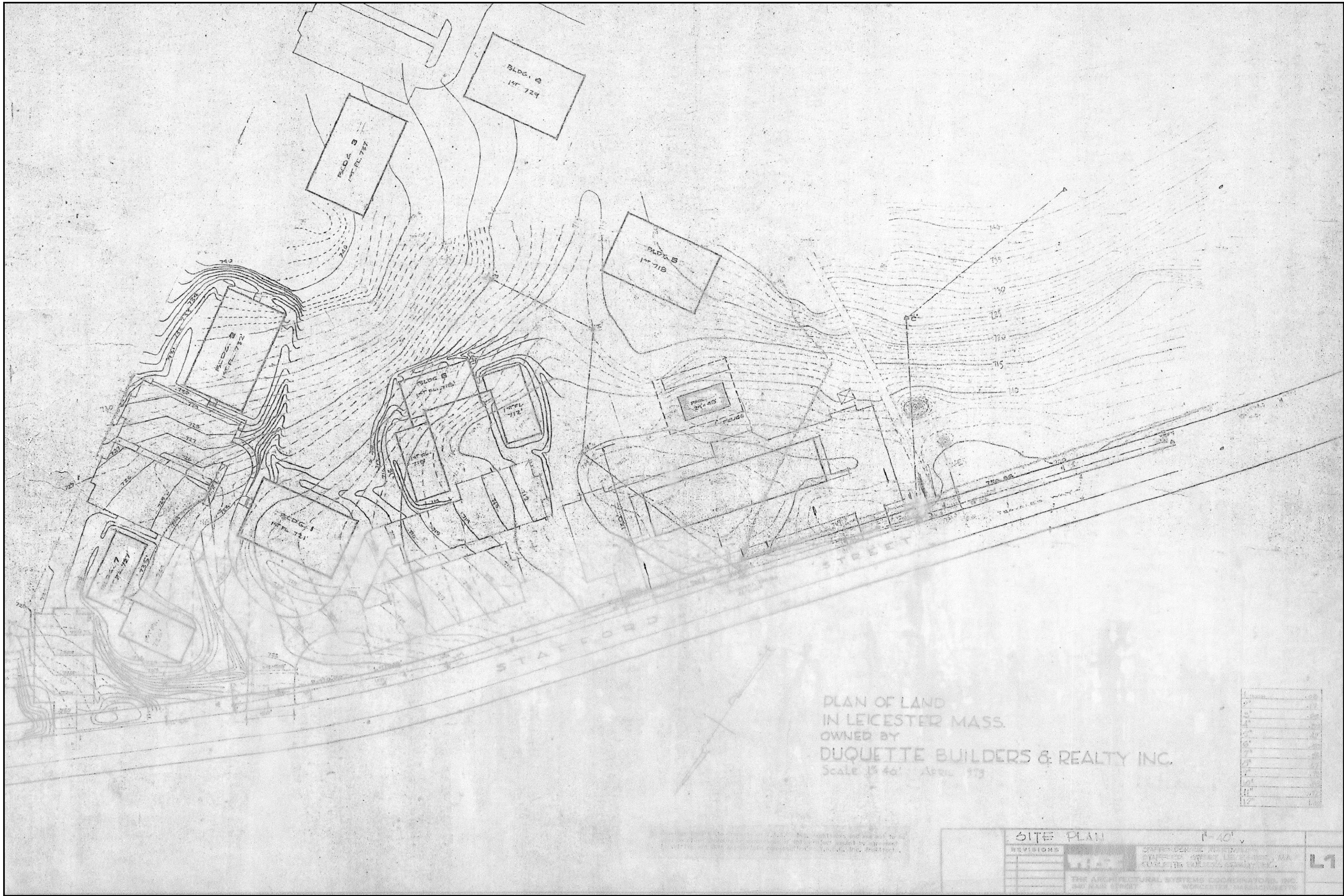
#526  
 35-C8.0  
 N/F  
 EDMUND J. JR. & NICOLE M.  
 THEBEAU  
 DB 40553, PG 184

#530  
 35-C8.0  
 N/F  
 PHILIP G. & ALICE M.  
 BERNARD  
 DB 15315, PG 209









PLAN OF LAND  
IN LEICESTER MASS.  
OWNED BY  
DUQUETTE BUILDERS & REALTY INC.  
Scale 1/8" = 40' April 1979

|     |     |
|-----|-----|
| 1"  | 40' |
| 2"  | 20' |
| 3"  | 13' |
| 4"  | 10' |
| 5"  | 8'  |
| 6"  | 7'  |
| 7"  | 6'  |
| 8"  | 5'  |
| 9"  | 4'  |
| 10" | 3'  |
| 11" | 2'  |
| 12" | 1'  |