

**LOT LOCUS**  
SCALE: 1"=1000'

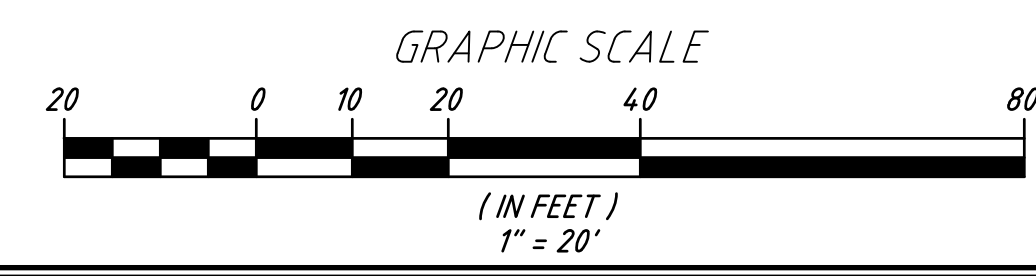
**PLAN REFERENCES:**  
(WORCESTER COUNTY REGISTRY OF DEEDS)  
LAND COURT PLAN # 16617B

**TAX MAP REFERENCES:**  
LEICESTER ASSESSORS  
TAX MAP PARCEL ID: 47A-A7.0

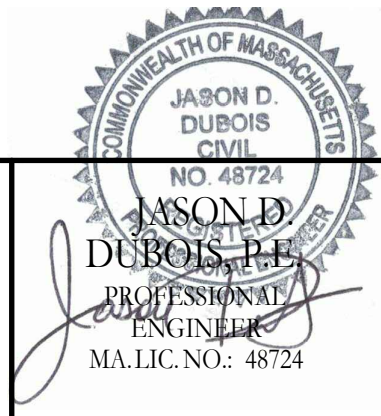
- GENERAL NOTES:**
- BOUNDARIES SHOWN ARE THE RESULTS OF AN ACTUAL FIELD SURVEY BASED ON AVAILABLE MAPS, DEEDS OF RECORD AND PHYSICAL EVIDENCE, BUT ARE SUBJECT TO ALL EASEMENTS, RIGHT OF WAYS, AGREEMENTS, AND RIGHTS AND ENCUMBRANCES OF RECORD THAT AN ACCURATE AND THOROUGH TITLE SEARCH MAY DISCLOSE.
  - LOCATION AND DEPTH OF ALL UNDERGROUND UTILITIES SHOWN ARE APPROXIMATE AND ARE BASED ON OBVIOUS ABOVE GROUND PHYSICAL UTILITY APPURTENANCES AND ACCESSIBLE MANHOLES. DIG SAFE SHALL BE NOTIFIED PRIOR TO ANY EXCAVATION OR CONSTRUCTION. ADDITIONAL UNDERGROUND UTILITIES MAY EXIST.
  - SUBSURFACE AND ENVIRONMENTAL CONDITIONS WERE NOT EXAMINED OR CONSIDERED AS PART OF THIS SURVEY. NO STATEMENT IS MADE CONCERNING THE EXISTENCE OF UNDERGROUND OR OVERHEAD CONTAINERS OR FACILITIES WHICH MAY AFFECT THE USE OR DEVELOPMENT OF THIS TRACT.
  - HORIZONTAL DATUM BASED ON NAD 83, VIA GLOBAL NAVIGATION SATELLITE SYSTEM (GNSS). THE GEOGRAPHIC AND STATE PLANE COORDINATES CONTAINED HEREON WERE THE RESULTS OF A SURVEY USING R.T.K. DUAL FREQUENCY G.P.S./G.N.S.S. RECEIVERS AND HAVING A POSITIONAL TOLERANCE LESS THAN 2 CM AT THE 95% CONFIDENCE LEVEL. REFERENCE MONUMENTS PROVIDED BY MULTIPLE LEICA SMARTNET VIRTUAL BASE STATIONS.
  - VERTICAL DATUM BASED ON NAVD 88, GEOID 12A, ESTABLISHED VIA GNSS.

**SYMBOL KEY**

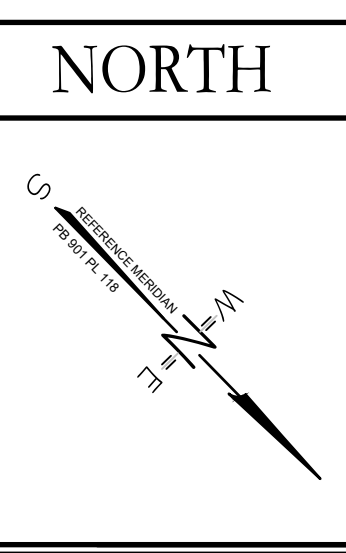
BOUND / MONUMENT	BITUMINOUS	BIT.
IRON PIPE	CONCRETE	CONC.
DRAIN MANHOLE	INVERT	INV.
ELECTRIC MANHOLE	REINFORCED CONCRETE PIPE	RCP
CATCH BASIN	POLYVINYL CHLORIDE PIPE	PVC
WETLAND FLAG	HIGH DENSITY PLASTIC	HDPE
UTILITY POLE	IRON PIPE	I.P.
GUY WIRE	FOUND	FND.
BENCH MARK	BOLLARD	BOL.
CHAIN LINK FENCE	SEWER MANHOLE	SMH
WOOD / STOCKADE FENCE	DRAINAGE MANHOLE	DMH
DRAIN LINE	WATER GATE	WG
OVERHEAD WIRES	HYDRANT	HYD.
CONTOUR 5' INTERVAL	UTILITY POLE	UP
CONTOUR 1' INTERVAL	GUY WIRE	GUY
X 69.33'		



NO.	DATE	REVISION	BY



**JEREMY S. CROTEAU, P.L.S.**  
PROFESSIONAL LAND SURVEYOR  
LIC.NO.: 48722



**SITE PLAN**  
SITE ADDRESS:  
760 Pleasant Street  
Leicester, MA  
CLIENT:  
760 Pleasant Street Realty Limited Partnership  
Leicester, MA

DRAWN BY: JSC  
CK'D BY: JDD  
DATE: 10-26-22  
PROJECT #: 22-177

**ENGINEERING & SURVEY INC.**  
388 GRANBERRY MEADOW RD  
CHARLTON, MA  
888-759-8888  
888-341-2127