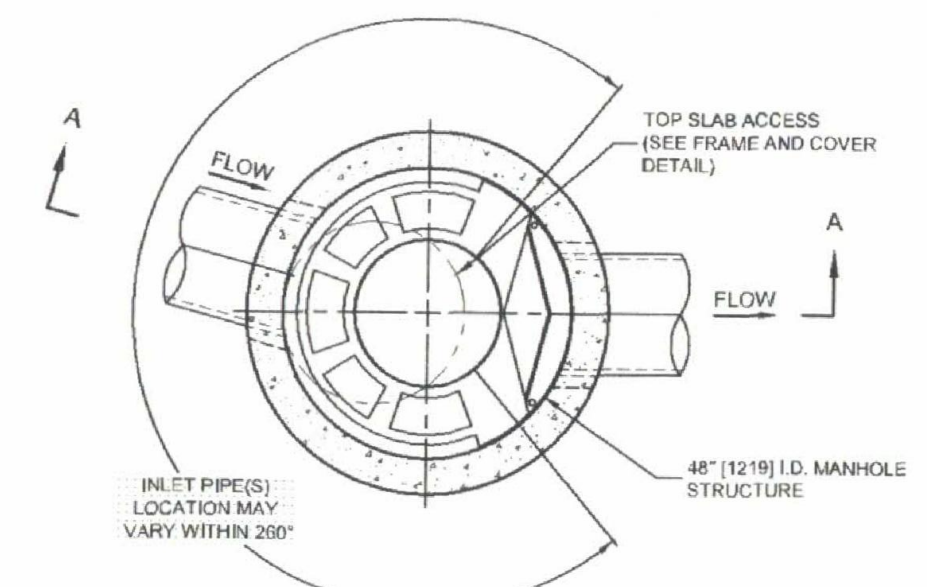
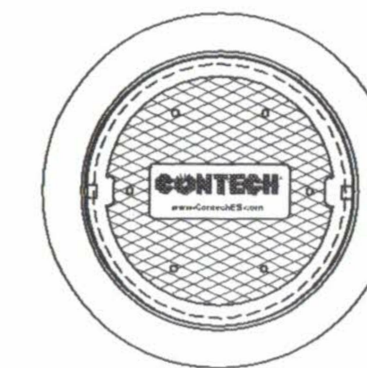


ASPHALT PAVEMENT DETAIL

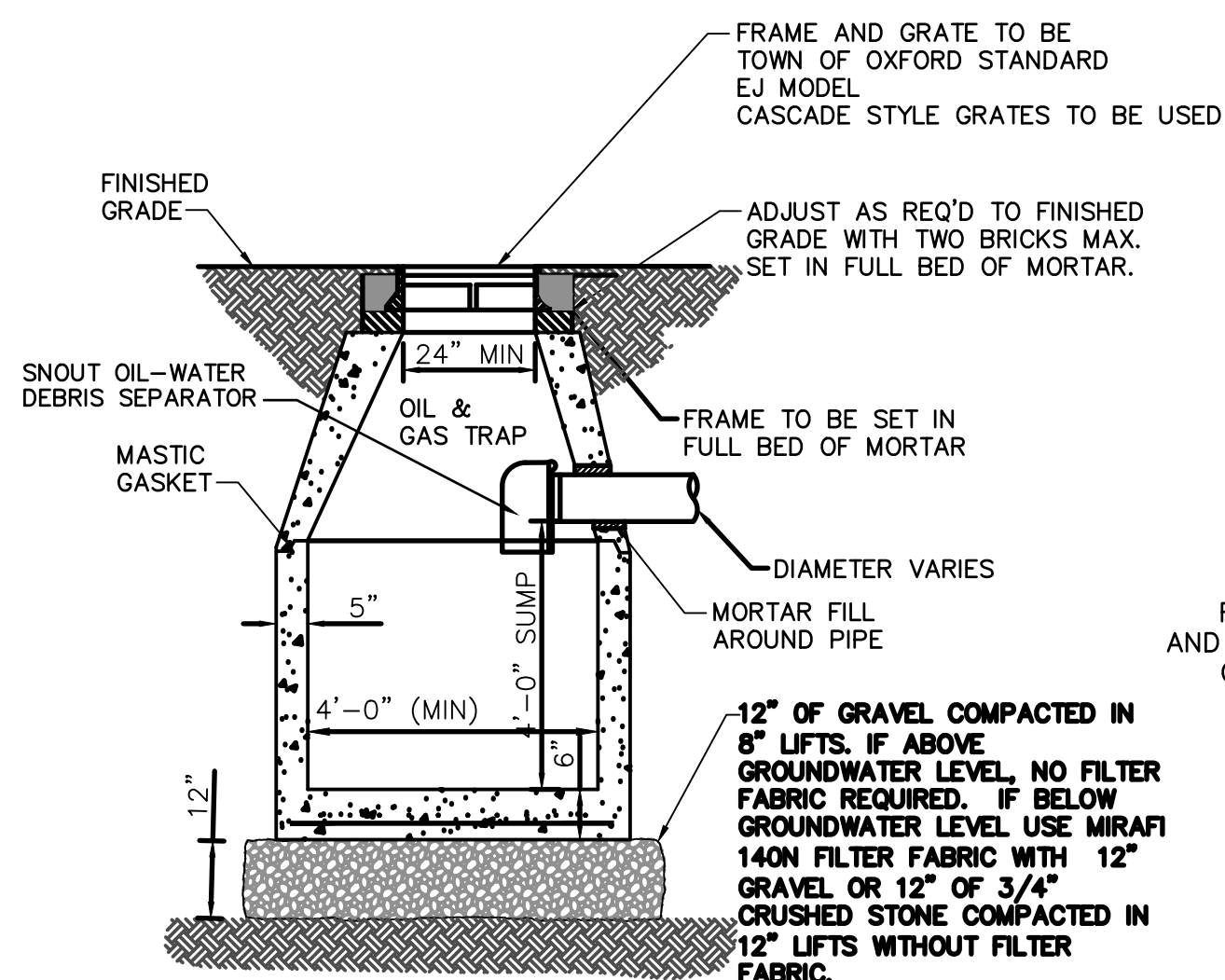
NOT TO SCALE



PLAN VIEW B-B  
NOT TO SCALE

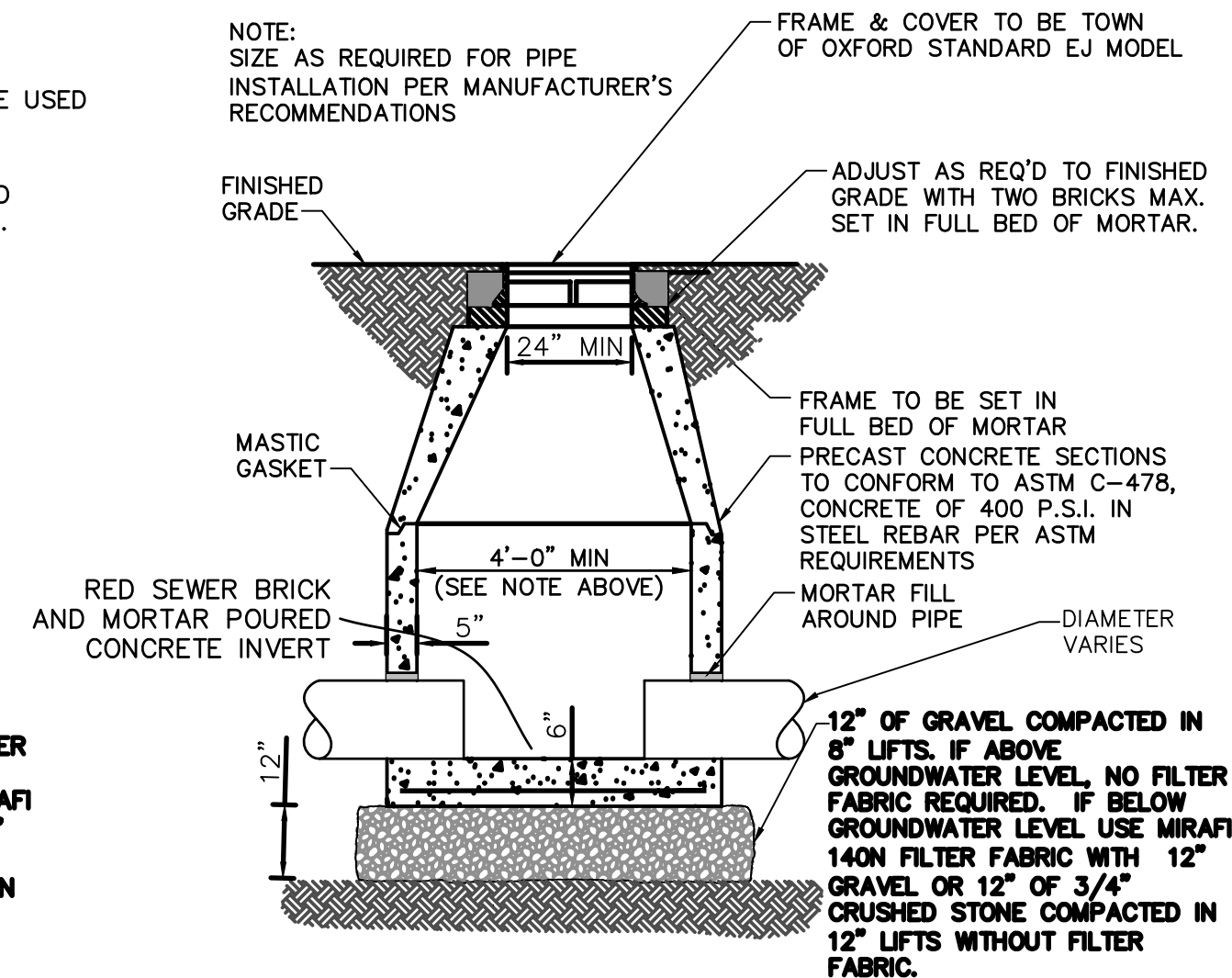


FRAME AND COVER  
(DIAMETER VARIES)  
NOT TO SCALE



DEEP SUMP CATCH BASIN

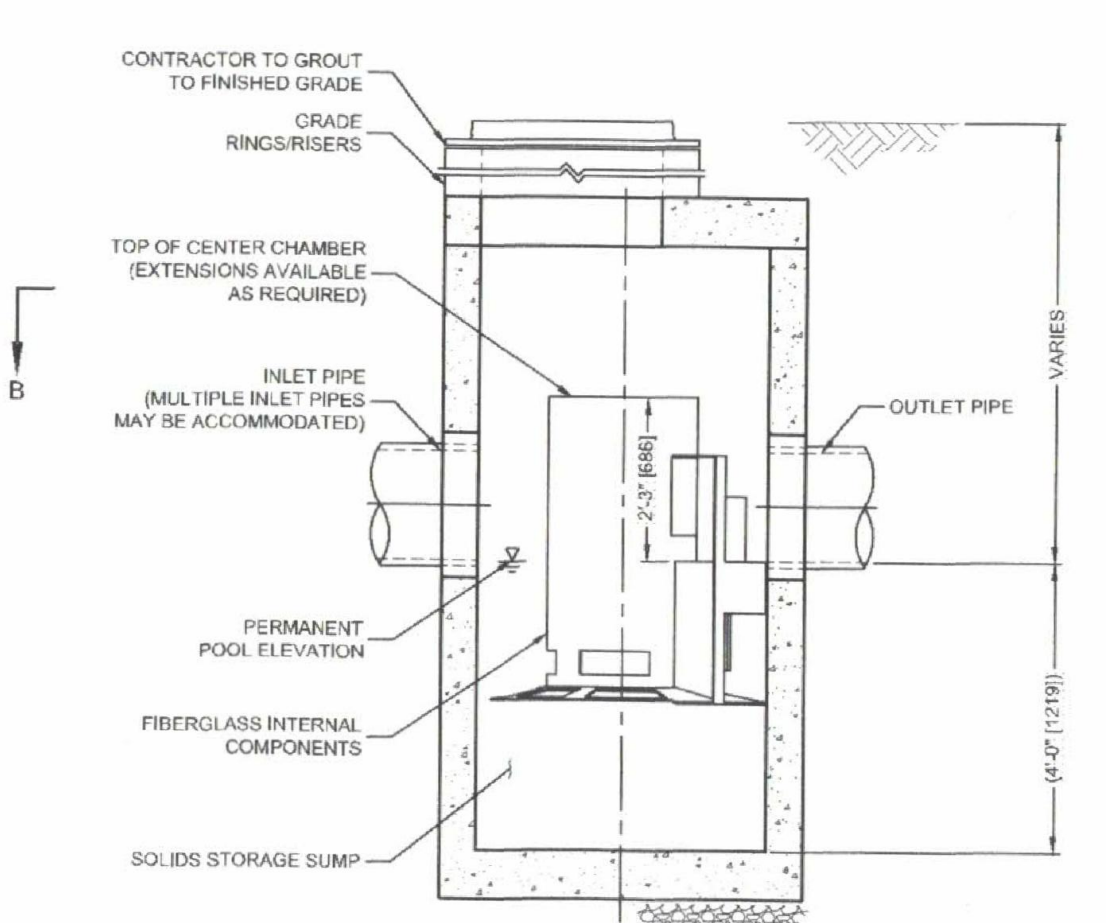
NOT TO SCALE



STANDARD DRAIN MANHOLE DETAIL

NOT TO SCALE

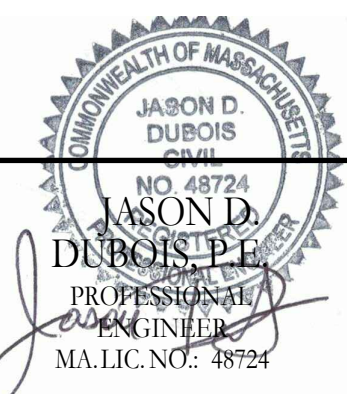
- GENERAL NOTES**
- CONTECH TO PROVIDE ALL MATERIALS UNLESS NOTED OTHERWISE.
  - FOR SITE SPECIFIC DRAWINGS WITH DETAILED STRUCTURE DIMENSIONS AND WEIGHT, PLEASE CONTACT YOUR CONTECH ENGINEERED SOLUTIONS LLC REPRESENTATIVE: [www.contech.com](http://www.contech.com)
  - CASCADE SEPARATOR WATER QUALITY STRUCTURE SHALL BE IN ACCORDANCE WITH ALL DESIGN DATA AND INFORMATION CONTAINED IN THIS DRAWING. CONTRACTOR TO CONFIRM STRUCTURE MEETS REQUIREMENTS OF PROJECT.
  - CASCADE SEPARATOR STRUCTURE SHALL MEET AASHTO H200 LOAD RATING, ASSUMING EARTH COVER OF 0'-2' (610), AND GROUNDWATER ELEVATION AT, OR BELOW, THE OUTLET PIPE INVERT ELEVATION. ENGINEER OF RECORD TO CONFIRM ACTUAL GROUNDWATER ELEVATION. CASTINGS SHALL MEET AASHTO M198 AND BE CAST WITH THE CONTECH LOGO.
  - CASCADE SEPARATOR STRUCTURE SHALL BE PRECAST CONCRETE CONFORMING TO ASTM C478 AND AASHTO LOAD FACTOR DESIGN METHOD.
  - ALTERNATE UNITS ARE SHOWN IN MILLIMETERS (mm).
- INSTALLATION NOTES**
- ANY SUB-BASE, BACKFILL DEPTH, AND/OR ANTI-FLOTATION PROVISIONS ARE SITE-SPECIFIC DESIGN CONSIDERATIONS AND SHALL BE SPECIFIED BY ENGINEER OF RECORD.
  - CONTRACTOR TO PROVIDE EQUIPMENT WITH SUFFICIENT LIFTING AND REACH CAPACITY TO LIFT AND SET THE CASCADE SEPARATOR MANHOLE STRUCTURE.
  - CONTRACTOR TO INSTALL JOINT SEALANT BETWEEN ALL STRUCTURE SECTIONS AND ASSEMBLE STRUCTURE.
  - CONTRACTOR TO PROVIDE, INSTALL AND GROUT INLET AND OUTLET PIPES. MATCH PIPE INVERTS WITH ELEVATIONS SHOWN. ALL PIPE CENTERLINES TO MATCH PIPE OPENING CENTERLINES.
  - CONTRACTOR TO TAKE APPROPRIATE MEASURES TO ASSURE UNIT IS WATER TIGHT, HOLDING WATER TO FLOWLINE INVERT MINIMUM. IT IS SUGGESTED THAT ALL JOINTS BELOW PIPE INVERTS ARE GROUTED.



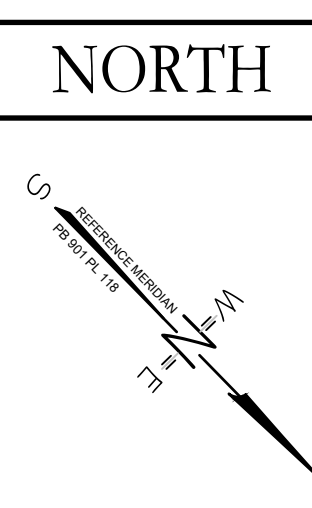
ELEVATION A-A  
NOT TO SCALE

CASCADE separator™

NO.	DATE	REVISION	BY



JEREMY S. CROTEAU, P.L.S.  
PROFESSIONAL LAND SURVEYOR  
LIC. NO.: 48722



**DETAILS**  
SITE ADDRESS:  
760 Pleasant Street  
Leicester, MA  
CLIENT:  
760 Pleasant Street Realty Limited Partnership  
PO Box 99  
Paxton, MA 01610

DRAWN BY: JSC  
CK'D BY: JDD  
DATE: 10-26-22  
PROJECT #: 22-177

REV #: 0  
SCALE: 1"=20'  
DWG. NO.: D-1

