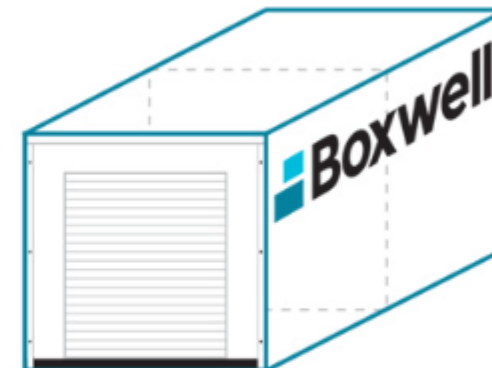


DIMENSIONS & WEIGHTS

END DOOR(S):

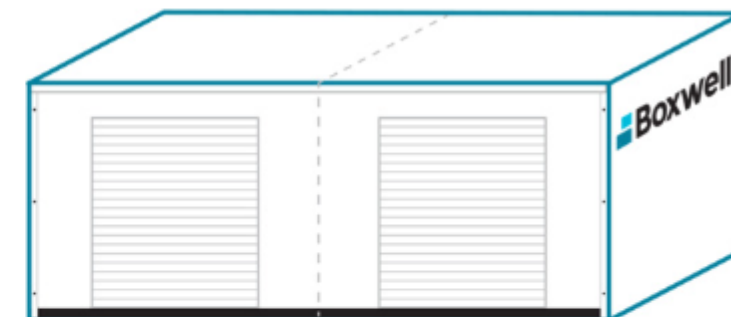
234" L x 96" W x 96" H
 Door Opening(s): 68" W x 72" H
 Weight: 3,300 lbs

**SIDE DOOR:**

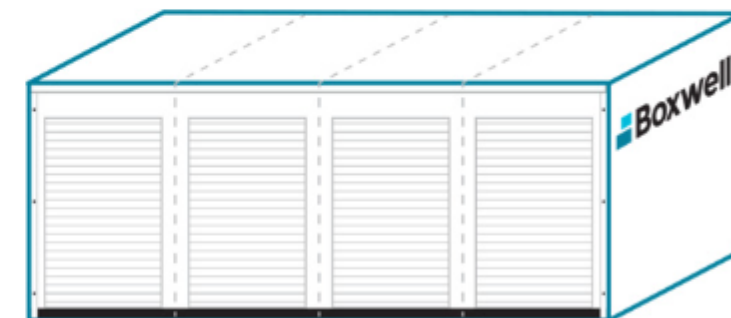
234" L x 96" W x 96" H
 Door Opening: 68" W x 72" H
 Weight: 3,300 lbs

**TWO SIDE DOORS:**

234" L x 96" W x 96" H
 Door Openings: 68" W x 72" H
 Weight: 3,500 lbs

**FOUR SIDE DOORS:**

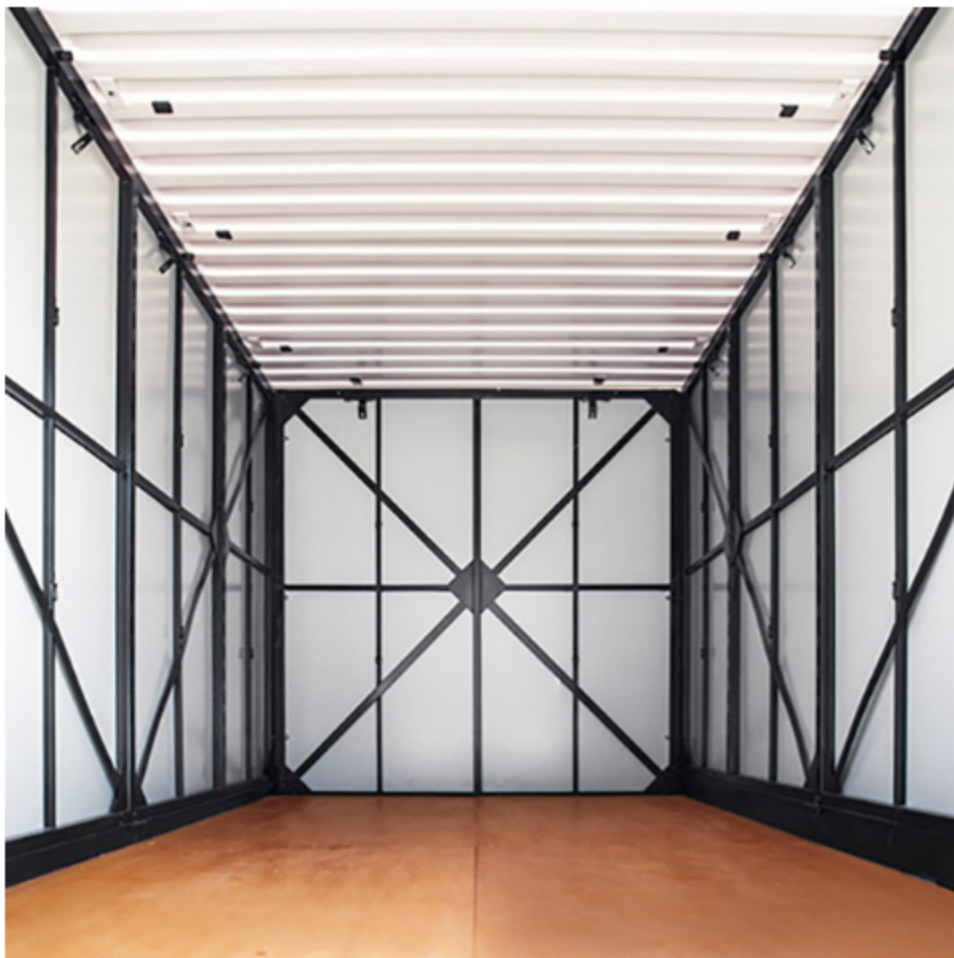
234" L x 96" W x 96" H
 Door Openings: 48" W x 72" H
 Weight: 4,000 lbs





STRUCTURE

- 10,000 lbs on base
- 120 mph wind resistant, 60 psf snow load on roof
- Easy to build – 24 total nuts and bolts
- Stackable three-high, fully loaded
- Fork pockets for easy moving, even when loaded
- Water, wind, dust, and pest-proof

**INTERIOR**

- Anti-condensation spray on ceiling absorbs moisture
- Two wall vents promote proper air flow
- Can be subdivided into smaller units with removable partitions
- Safety and packing stickers included



SERVICES & WARRANTIES

- Site layouts – ensure your land is optimized
- Choose the best colors with unit mockups and renderings
- On-site unload/install assistance upon delivery of first order
- White glove install service available (subject to additional fees)
- One year warranty – workmanship, materials, and defects
- Five year warranty – paint
- Seven year warranty – 3M® vinyl decals



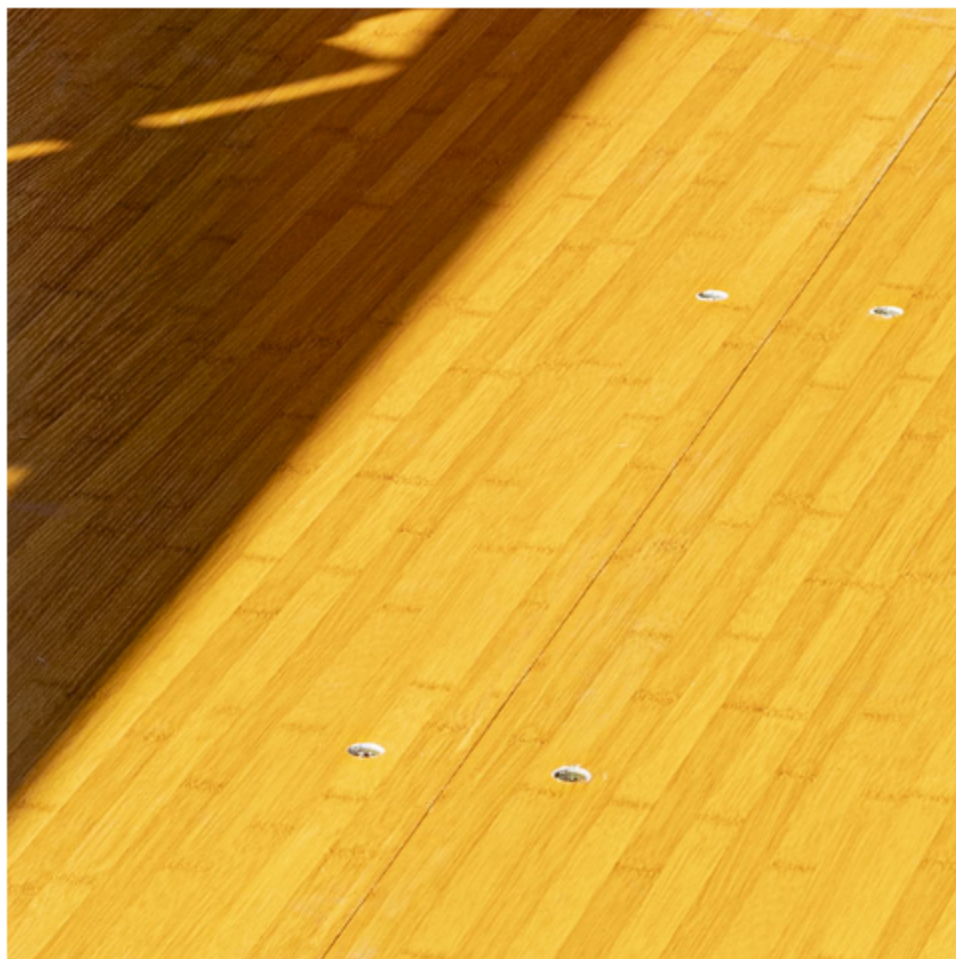
STEEL CONSTRUCTION

- Highest grade and best quality steel, SPA-H and SPA-C
- All hardware is stainless steel and will not rust
- Roof is made of single piece of steel – will not sag or rust
- Corrugated roof mitigates water pooling
- “Shoe box” style roof overhang prevents water from running down walls



DOOR

- Roll up or swing doors available
- Roll up doors come pre-assembled and lubricated
- Wide variety of lock assemblies, including smart locks
- Roll up doors are ADA compliant
- Match existing buildings – choose from a wide range of colors



FLOORING

- 19 mm marine grade plywood
- Triple sealed with non-slip, non-odorous coating
- Floor is raised off the ground to allow proper drainage
- Light or dark finish available
- Diamond plate upgrade available