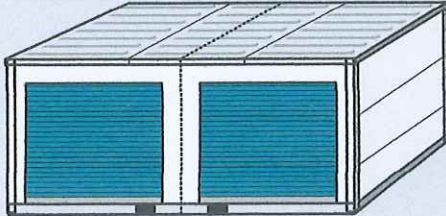


COMMON CONFIGURATIONS



TWO SIDE DOORS

Two 100 ft² rentable units

DIMENSIONS

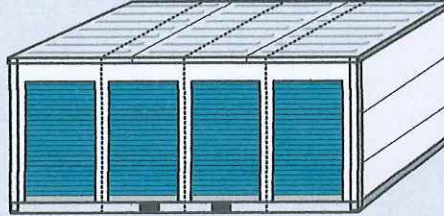
Exterior: 240" L x 120" W x 108" H

Interior: 236" L x 116" W

Door Opening: 90" W x 84" H

WEIGHT

Tare: 4,600 lbs



FOUR SIDE DOORS

Four 50 ft² rentable units

DIMENSIONS

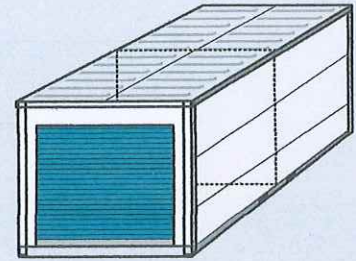
Exterior: 240" L x 120" W x 108" H

Interior: 236" L x 116" W

Door Opening: 48" W x 84" H

WEIGHT

Tare: 4,850 lbs



END DOOR(S)

One 200 ft² rentable unit or
Two 100 ft² units (if divided)

DIMENSIONS

Exterior: 240" L x 120" W x 108" H

Interior: 236" L x 116" W

Door Opening: 90" W x 84" H

WEIGHT

Tare: 4,400 lbs

FEATURES + OPTIONS Boxwell relocatable units are continuously being upgraded and improved. Exact specifications are subject to change without notice. Units are fully custom, additional options available.

STEEL CONSTRUCTION

- Highest grade and best quality steel, SPA-H and SPA-C
- Hot-dipped galvanized base, frame, roof
- Wall panel thickness: 1.0mm (19 ga)
- Roof thickness: 4.0mm (6 ga) corrugated "ISO Style" steel
- All hardware is stainless steel, will not rust
- Customizable to any color

STRUCTURE

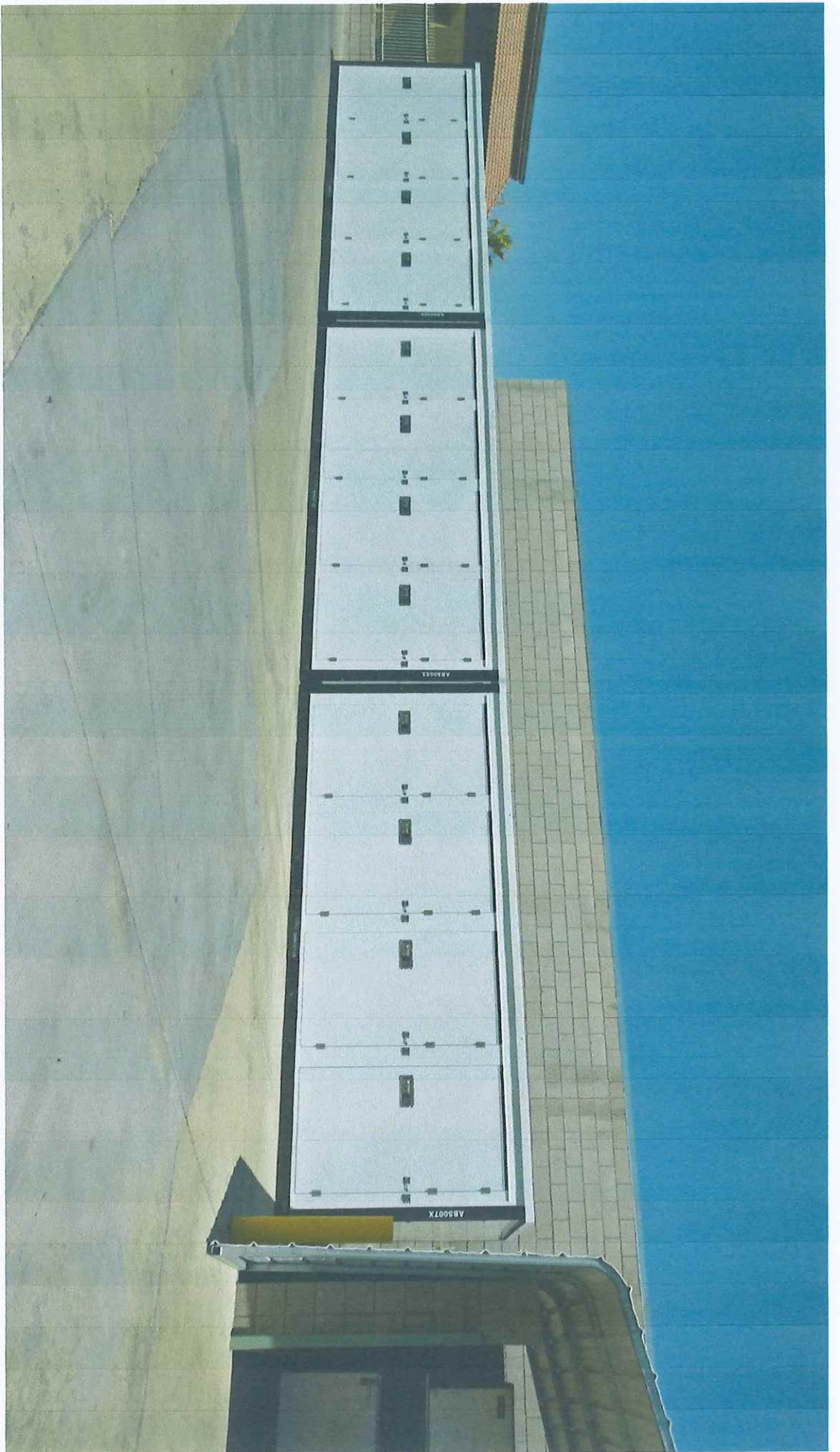
- Load Rating: 125 psf on base
- Wind Rating: 120 mph
- Snow Load: 60 psf on roof
- Build time: less than two hours per unit
- Fork pockets for easy moving/stacking
- Capable of car storage, no upgrades needed

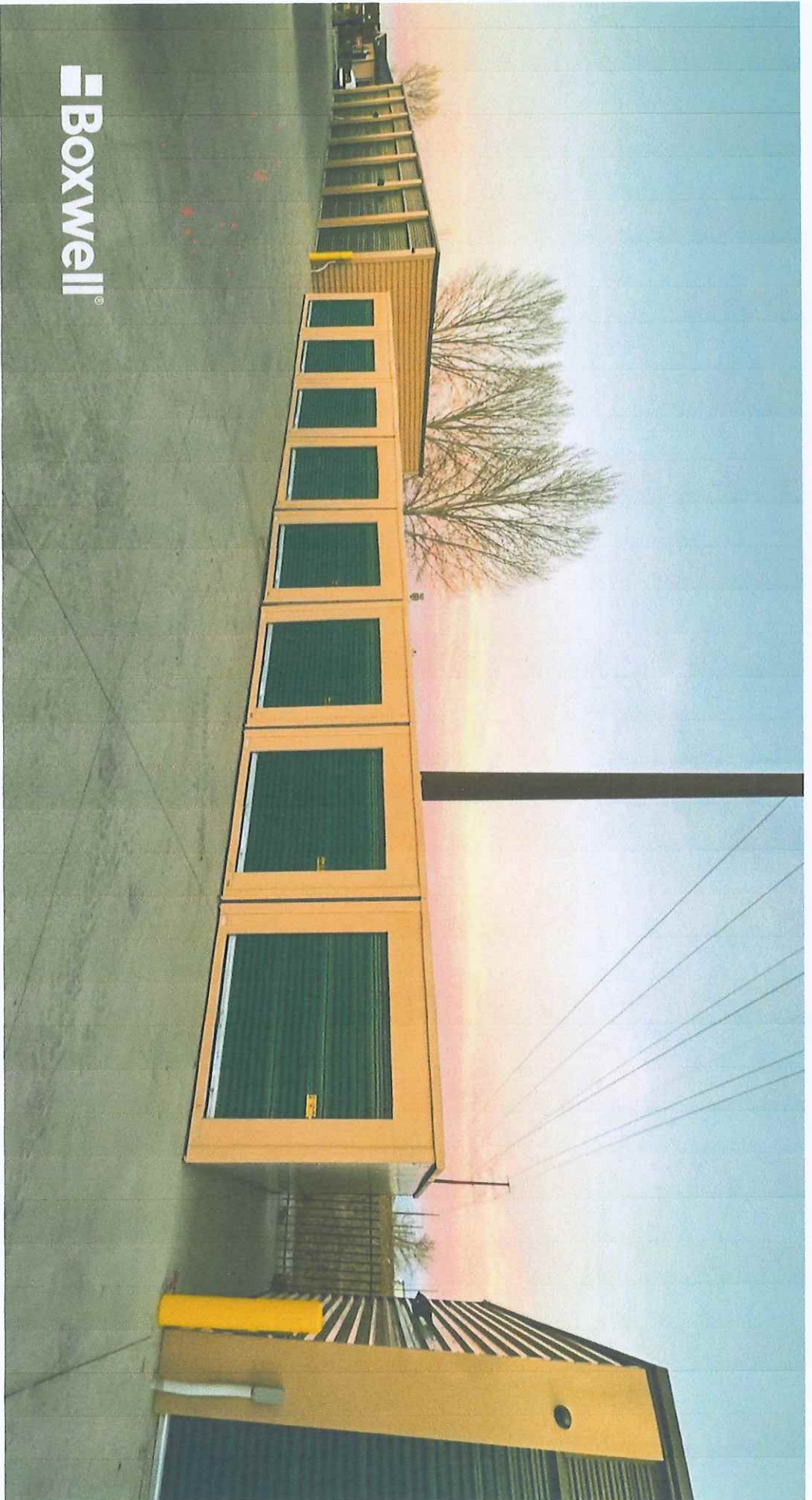
INTERIOR

- Marine grade plywood ($\frac{3}{4}$ ") sealed with non-slip, non-toxic, non-odorous coating
- Choose from light or dark flooring finish
- Diamond plate flooring upgrade available
- Wall vents promote ample air flow
- Anti-condensation spray on ceiling
- Adjust unit mix with removable steel partition(s)

SERVICES + WARRANTIES

- Graphic design, unit renderings, and site layouts available to all Boxwell clients
- Standard for all first orders: on-site Boxwell rep to oversee delivery and unload process
- White glove install service available
- One year warranty: manufacturing, material, and workmanship
- Five year warranty: paint





 **Boxwell®**

PEPIN GRANITE INC.

1500 MAIN ST.

LEICESTER, MA 01524

508-892-4193

To whom it may concern, we at Pepin Granite Inc. have had many dealings with Justin Zuffante. He is a very reputable businessman in our community. I feel he is respectful to his neighbors, runs a clean operation at his establishments and I see no negative impact on the neighborhood or community if he expands his location and adds portable storage containers. Thank you sincerely.

Leo Pepin Jr.