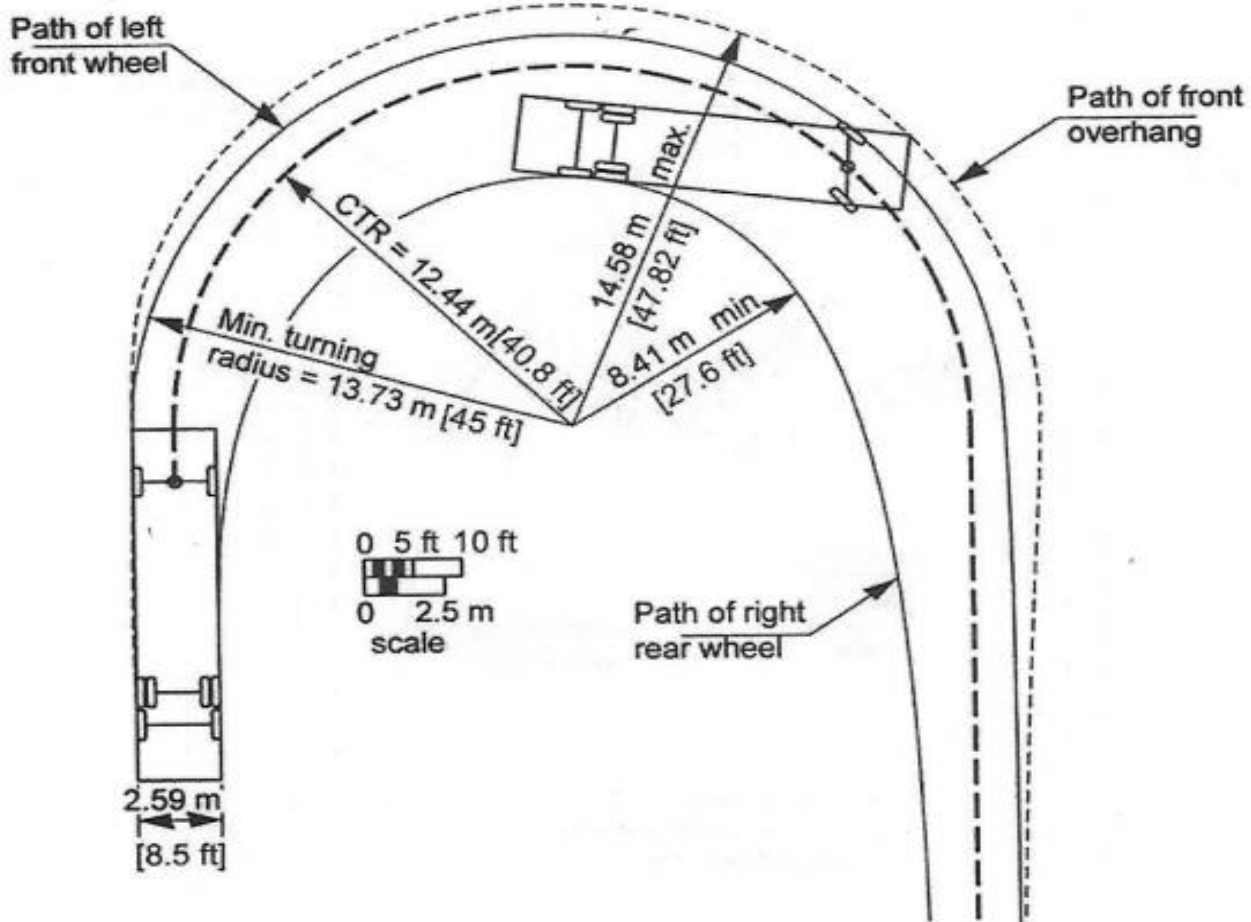
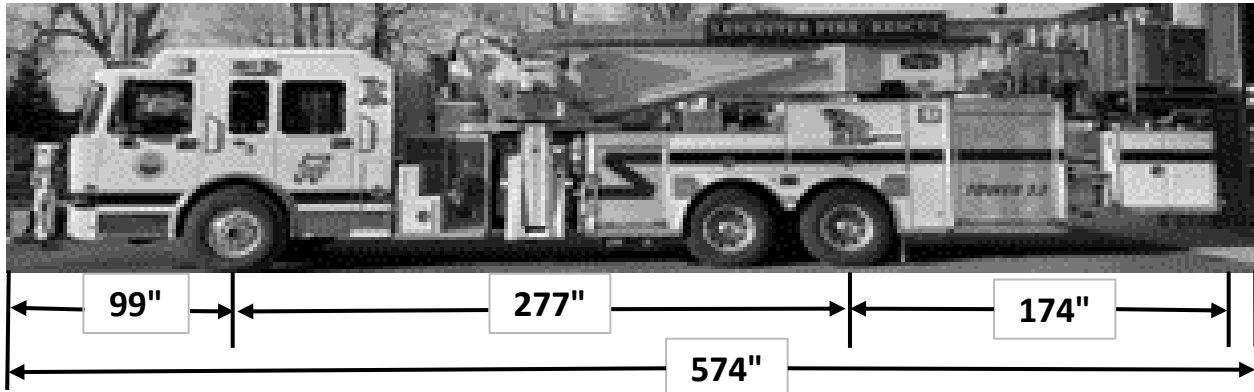




**Town of Leicester Fire Department**  
**3 Paxton Street**  
**Leicester Massachusetts, 01524**  
**Tower Ladder 53**



- Assumed steering angle is  $38.7^{\circ}$
- CTR = Centerline turning radius at front axle

Overall Length > 571"  
Overall Width > 120"  
Overall Body Height > 136"  
Min. Body Ground Clearance > 11"