

Building Renderings

Storage Units

1749 Main Street

**RECEIVED**

**NOV 07 2016**

Town of Leicester  
Development & Inspectional Services



8.5 Feet High

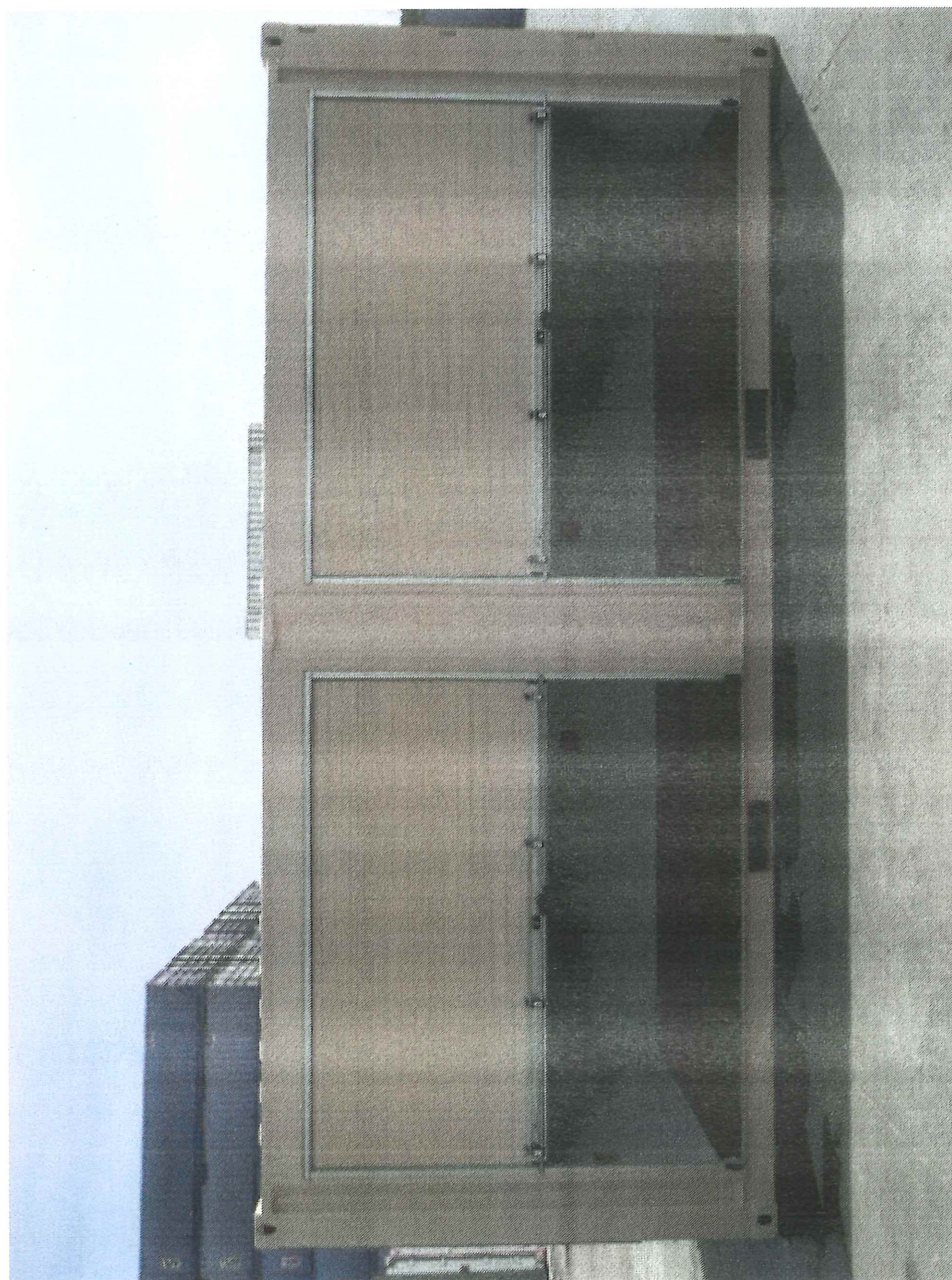


8 Foot Height

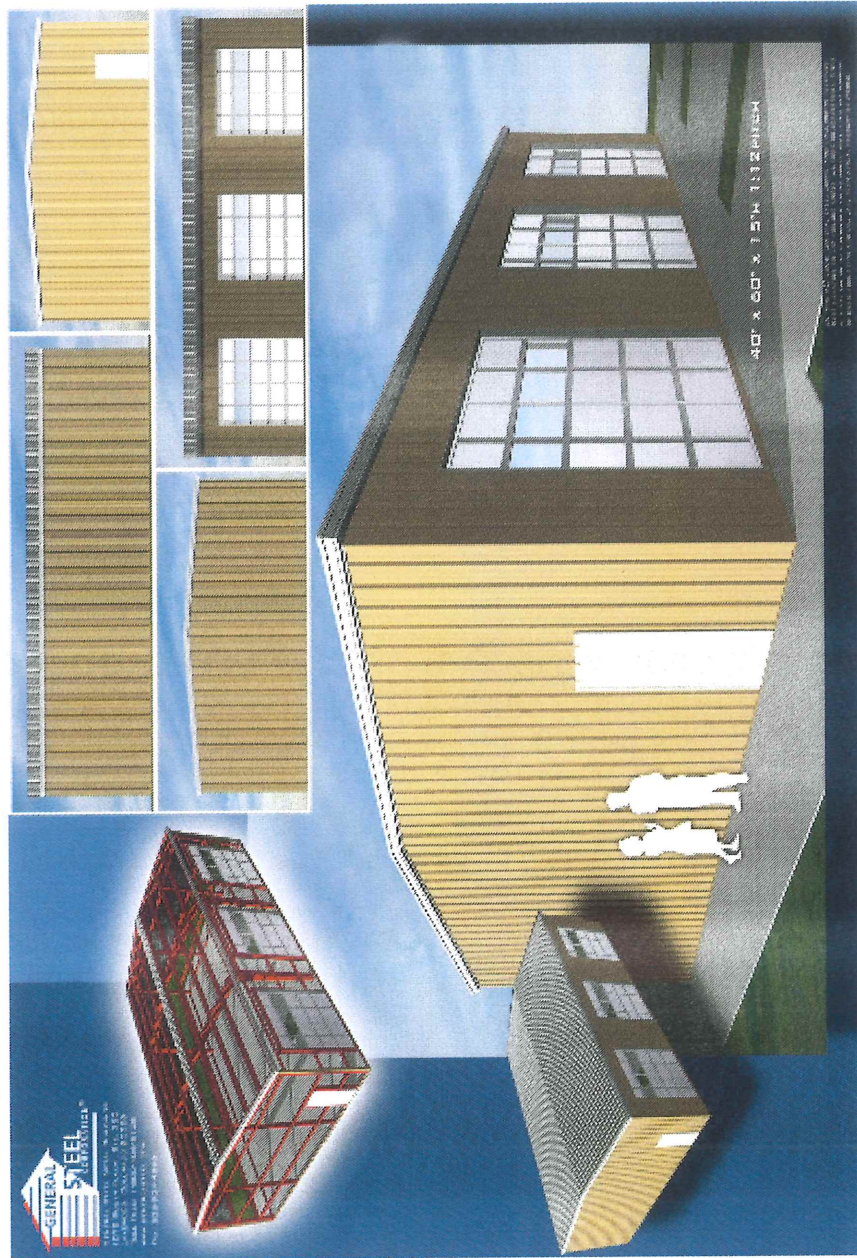




↙ 8 Foot Height









# Cool Standard Colors

## Selection Chart

### SIGNATURE® 200 | Siliconized Polyester

*Polar White is a Straight Polyester.*



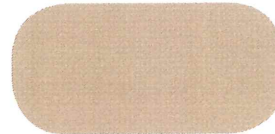
POLAR WHITE  
SR .58 SRI 69



LIGHT STONE  
SR .50 SRI 58



ASH GRAY  
SR .48 SRI 56



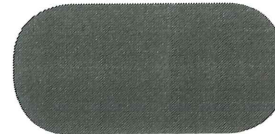
SADDLE TAN  
SR .48 SRI 56



HAWAIIAN BLUE  
SR .32 SRI 35



CHARCOAL GRAY  
SR .28 SRI 29



BURNISHED SLATE  
SR .28 SRI 29

24-gauge material available in Light Stone and Polar White only.

Standard roll-formed gutter and gable trim are available in Polar White, Light Stone, Hawaiian Blue and Burnished Slate.

### SIGNATURE® 300 | Low Gloss Colors | Kynar 500® | Hylar 5000®



BROWNSTONE  
SR .47 SRI 54



MEDIUM BRONZE  
SR .33 SRI 36



SNOW WHITE  
SR .65 SRI 79



ALMOND  
SR .63 SRI 76



SLATE GRAY  
SR .37 SRI 41



CLASSIC GREEN  
SR .28 SRI 29



PACIFIC BLUE  
SR .29 SRI 31



COLONIAL RED  
SR .34 SRI 37

Roof panels, wall panels and roll-formed gutter and gable trim are available in all Signature® 300 colors.

#### What is Solar Reflectivity (SR)?

Solar reflectivity or reflectance is the ability of a material to reflect solar energy from its surface back into the atmosphere. The SR value is a number from 0 to 1.0. A value of 0 indicates that the material absorbs all solar energy and a value of 1.0 indicates total reflectance. Energy Star requires a SR value of 0.25 or higher for steep slope (above 2:12) roofing and a SR value of 0.65 or higher for low slope (2:12 or less) roofing. For more information, please go to [www.energystar.gov](http://www.energystar.gov).

#### What is Solar Reflectance Index (SRI)?

The SRI is used to determine compliance with LEED requirements and is calculated according to ASTM E 1980 using values for reflectance and emissivity. Emissivity is a material's ability to release absorbed energy. To meet LEED requirements, a roofing material must have a SRI of 29 or higher for steep slope (above 2:12) roofing and a SRI value of 78 or higher for low slope (2:12 or less) roofing. For more information, please go to [www.usgbc.org](http://www.usgbc.org).



- For the most current information available, including complete color availability for individual panel profiles and roll-formed gutter and gable trim, visit [starbuildings.com](http://starbuildings.com).
- 26-gauge material available in all colors.
- A 25-year limited paint warranty available for all colors upon written request.
- Final selection should be made from actual color chips.