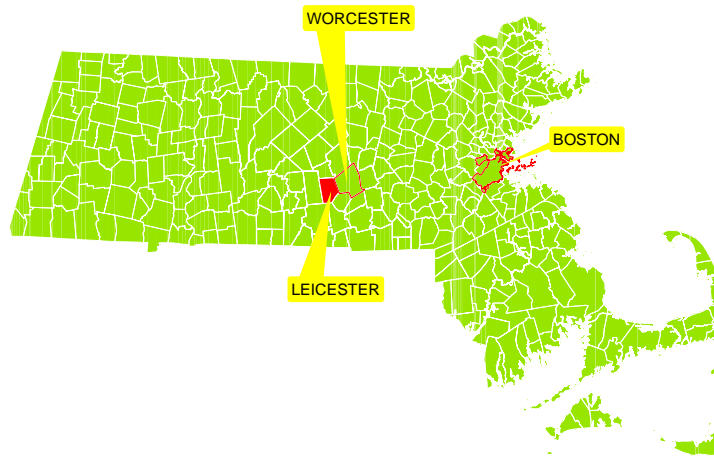


TOWN OF LEICESTER, MASSACHUSETTS



Location:

It is in central Massachusetts, bordered by Paxton on the north, Auburn and Worcester on the east, Charlton and Oxford on the south, and Spencer on the west. Leicester is 46 miles west of Boston.

- Total Area: 24.68 sq. miles
- Land Area: 23.36 sq. miles
- Population: 10,970
- Density: 444 per sq. mile

This snapshot contains details about the following items:

- Population
- Economy
- Land use
- Housing
- Public Safety
- Education
- Transportation
- Traffic Safety

Data Sources:

The Massachusetts Department of Transportation / Geographic Information Systems / Education / State Police / Division of Unemployment Assistance / Housing and Community Development, The US Census Bureau, Massachusetts Association of Realtors, Massachusetts Institute for Social and Economic Research (MISER), The Warren Group and massbenchmarks.org.

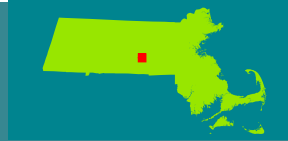
Community Snapshot

Leicester

This snapshot contains data on:

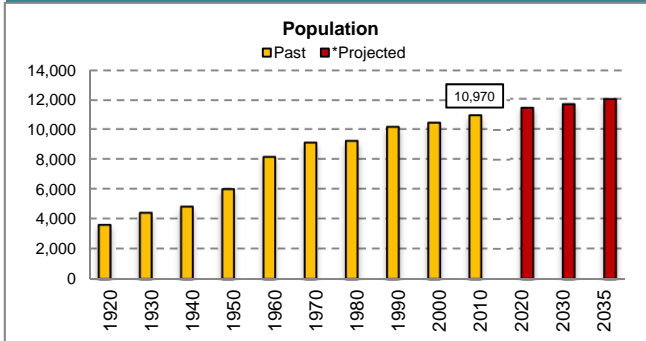
Population-Economy-Housing-Education-Transportation-Public Safety

Central Massachusetts Regional Planning Commission



www.cmrpc.org

POPULATION



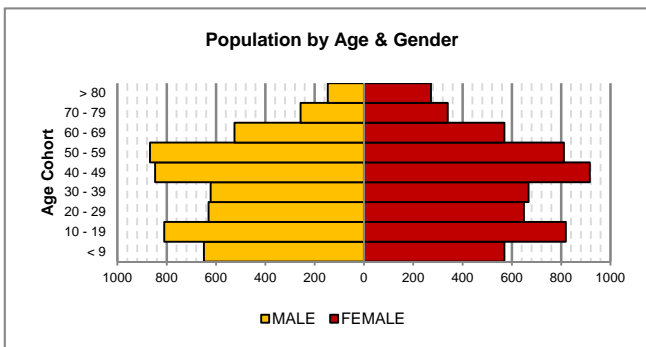
Source: US Census

*CMRPC Projections approved March 2011

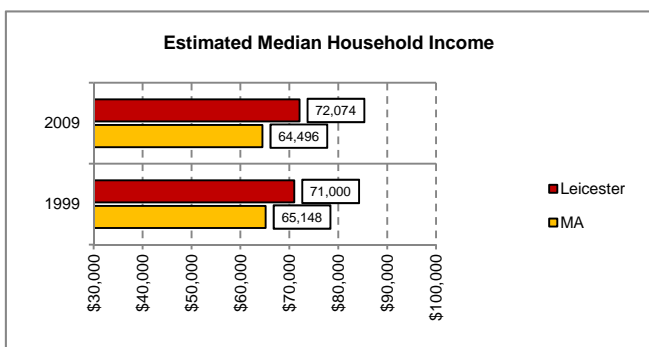
ECONOMY



Source: MA Division of Unemp. Assist.

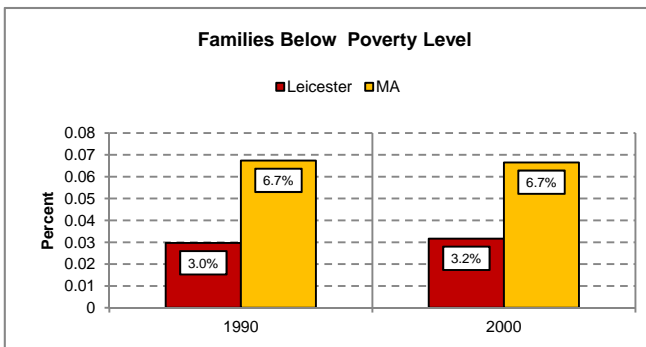


Source: US Census 2010

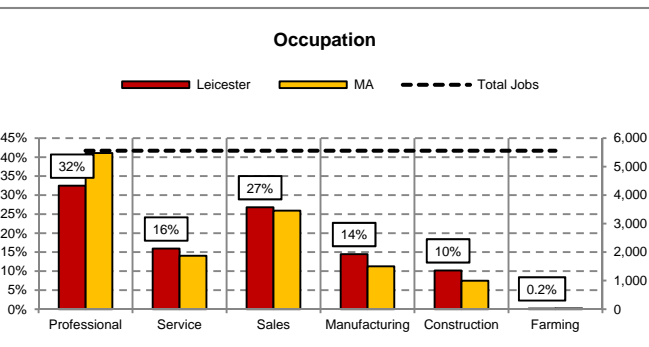


Source: American Community Survey

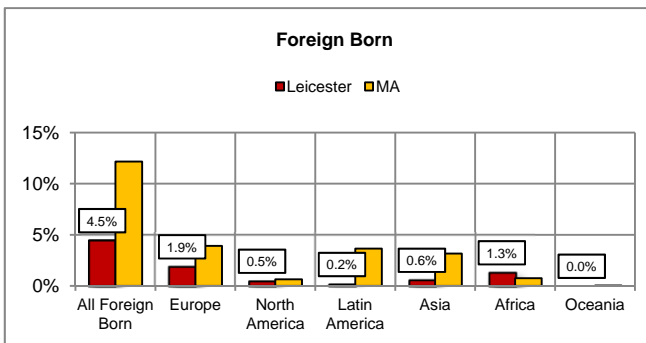
2009 inflation-adjusted dollars



Source: massbenchmarks.org

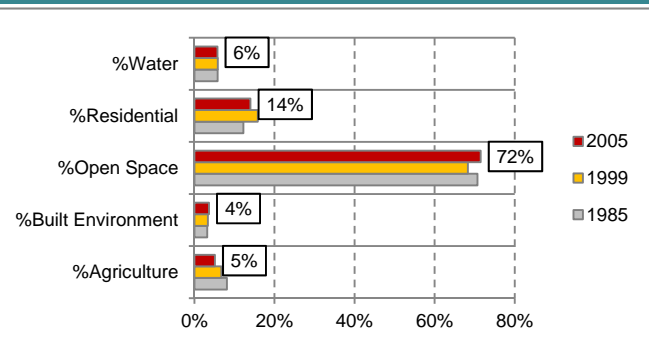


Source: US Census



Source: US Census

LANDUSE



Source: MassGIS

Find Excel version of these tables at: <http://www.cmrpc.org/Stats-Demographics>

Community Snapshot

Leicester

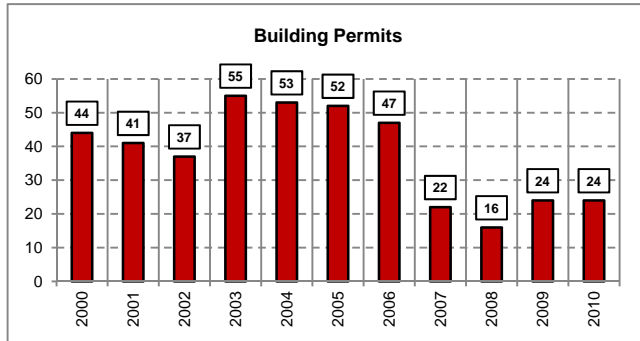
This snapshot contains data on:

Population-Economy-Housing-Education-Transportation-Public Safety
Central Massachusetts Regional Planning Commission



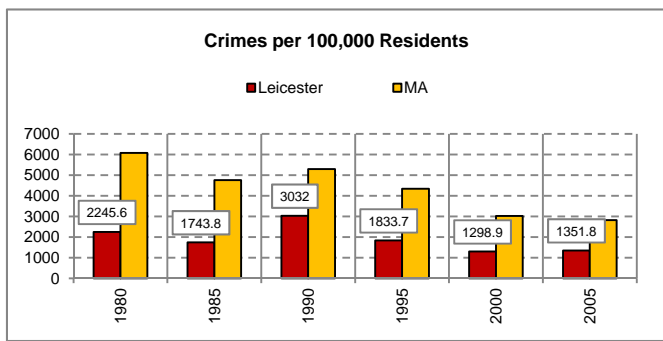
www.cmrpc.org

HOUSING

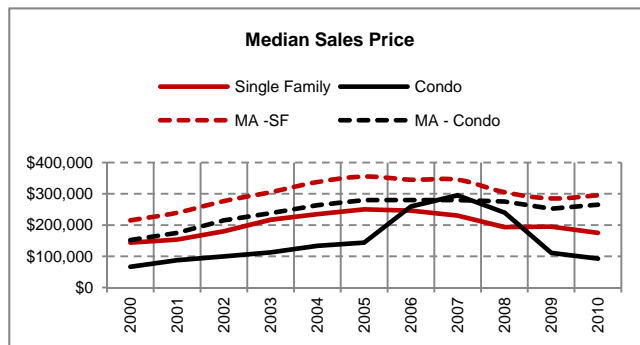


Source: CMRPC / MISER / US Census

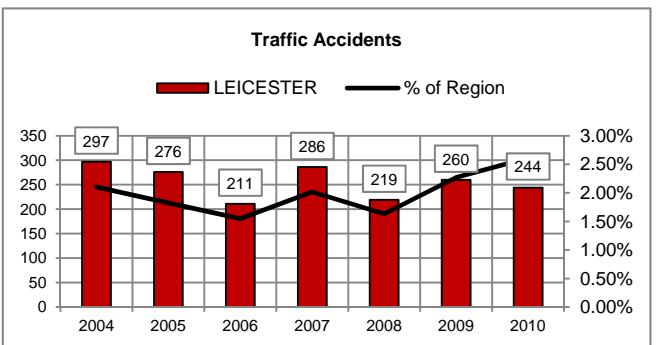
PUBLIC SAFETY



Source: MA State Police



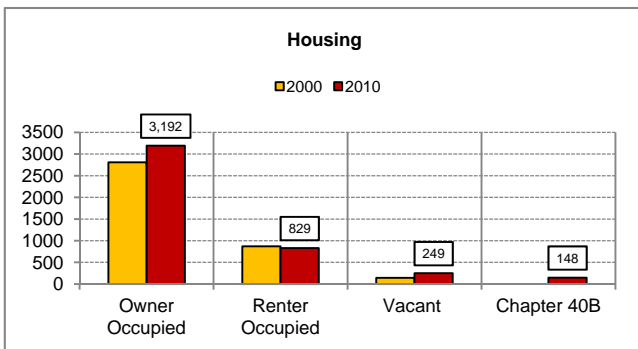
Source: The Warren Group/Mass. Assoc. of Realtors



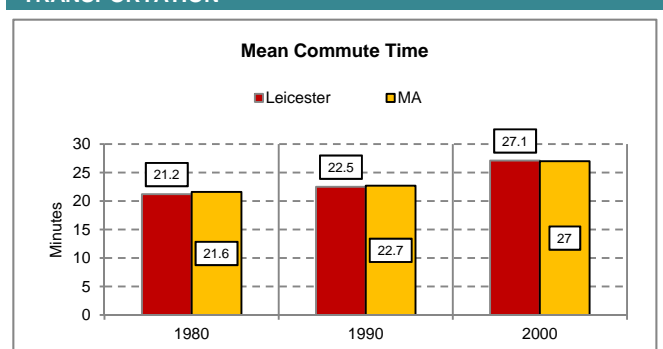
Source: Mass DOT Highway

State & Local Police Jurisdiction

TRANSPORTATION

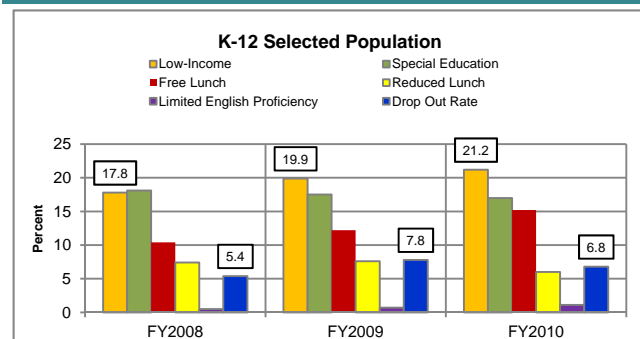


Source: US Census

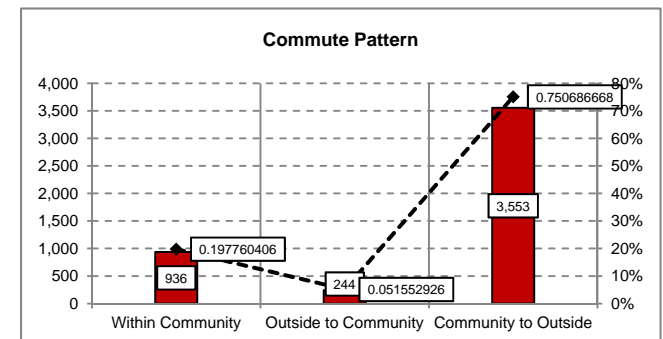


Source: US Census

PUBLIC SCHOOLS



Source: MA Dept of Education



Source: US Census 2000

Find Excel version of these tables at: <http://www.cmrpc.org/Stats-Demographics>

Community Snapshot

Leicester

This snapshot contains data on:

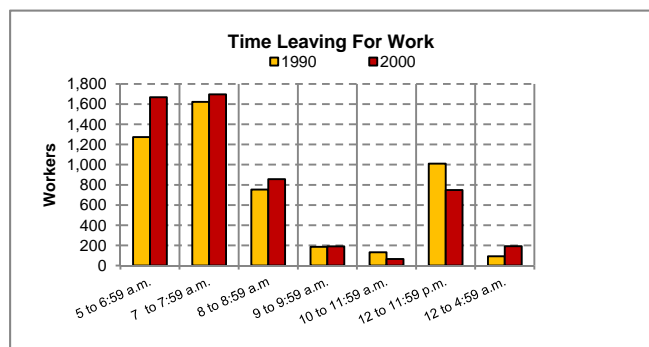
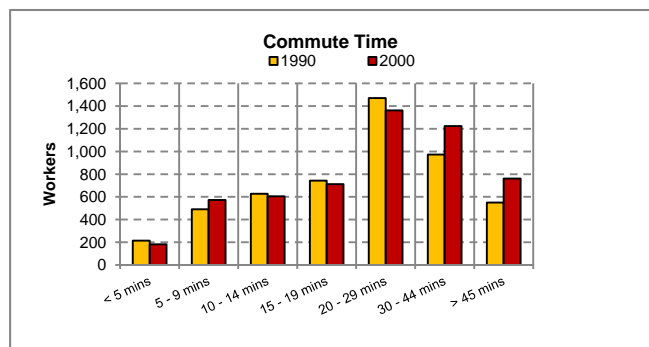
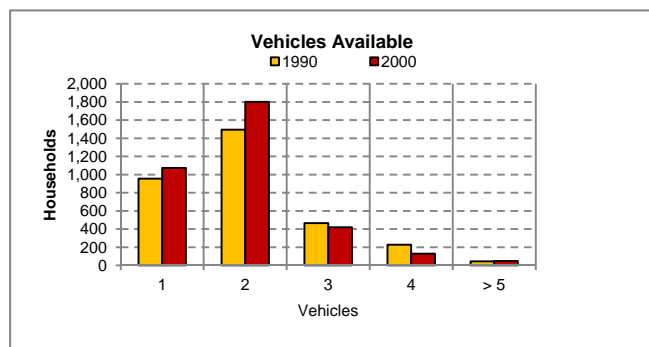
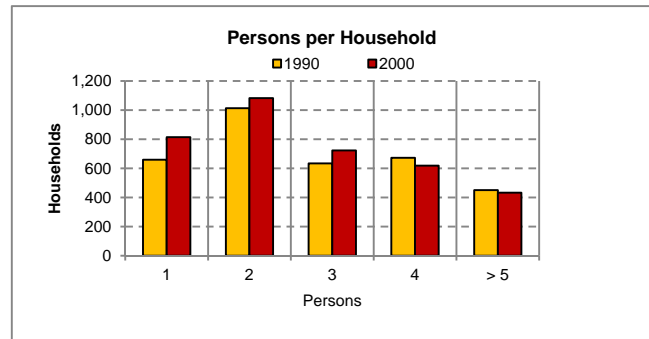
Population-Economy-Housing-Education-Transportation-Public Safety

Central Massachusetts Regional Planning Commission



www.cmrpc.org

POPULATION			
	1990	2000	% Change
Total Population	10,191	10,471	2.7%
In households	9,751	10,075	3.3%
In group quarters	440	396	-10.0%
PERSONS PER HOUSEHOLD			
Total Households	3,429	3,670	7.0%
1	659	814	23.5%
2	1,013	1,082	6.8%
3	634	723	14.0%
4	672	618	-8.0%
> 5	451	433	-4.0%
Mean persons / household	3	3	-3.2%
VEHICLES AVAILABLE			
Total Households	3,429	3,670	7.0%
0	242	201	-16.9%
1	955	1,073	12.4%
2	1,495	1,801	20.5%
3	465	420	-9.7%
4	228	128	-43.9%
> 5	44	47	6.8%
Mean vehicles / household	2	2	-3.2%
WORKERS BY GENDER			
Workers 16 years and over	5,162	5,510	6.7%
Male	2,714	2,840	4.6%
Female	2,448	2,670	9.1%
COMMUTE MODE			
Workers 16 years and over	5,162	5,510	6.7%
Drive Alone	4,286	4,604	7.4%
Carpool	574	589	2.6%
Transit / Taxi	56	99	76.8%
Bike / Ped	152	99	-34.9%
Motorbike	0	27	NA
Work at home	94	92	-2.1%
COMMUTE TIME			
Workers not working at home	5,068	5,418	6.9%
< 5 mins	214	182	-15.0%
5 - 9 mins	490	572	16.7%
10 - 14 mins	627	605	-3.5%
15 - 19 mins	743	712	-4.2%
20 - 29 mins	1,471	1,362	-7.4%
30 - 44 mins	973	1,224	25.8%
> 45 mins	550	761	38.4%
Mean travel time to work (mins)	23	27	20.4%
TIME LEAVING FOR WORK			
Workers not working at home	5,068	5,418	6.9%
5 to 6:59 a.m.	1,273	1,668	31.0%
7 to 7:59 a.m.	1,622	1,697	4.6%
8 to 8:59 a.m.	753	857	13.8%
9 to 9:59 a.m.	185	191	3.2%
10 to 11:59 a.m.	132	65	-50.8%
12 to 11:59 p.m.	1,011	748	-26.0%
12 to 4:59 a.m.	92	192	108.7%



Source: Census Transportation Planning Package (CTPP 2000)

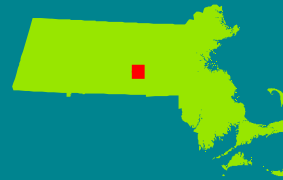
Find Excel version of these tables at: <http://www.cmrpc.org/Stats-Demographics>

Community Snapshot

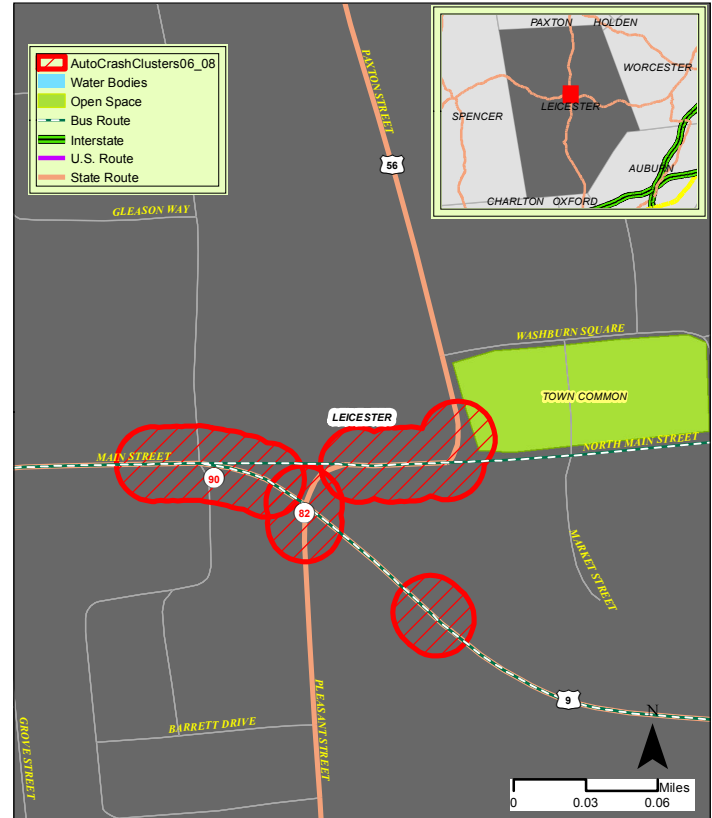
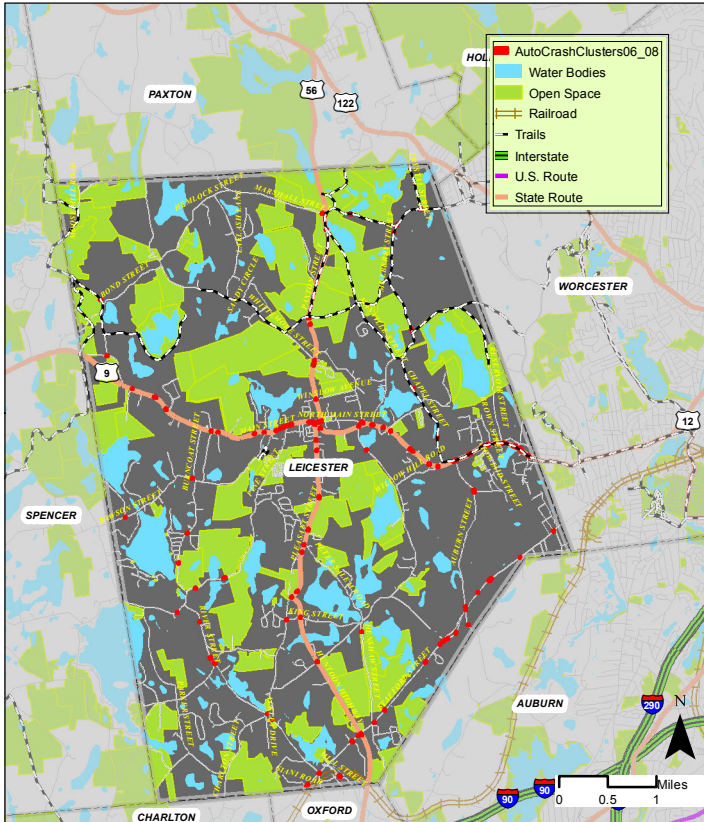
Information depicted on these maps for planning purposes.
Data obtained from MassDOT, MassGIS, CMRPC
Produced by the GIS Center :
Central Massachusetts Regional Planning Commission
2 Washington Sq, Union Station, 2nd Floor, Worcester,
MA 01604-4016

This snapshot contains data on:
Population-Economy-Housing-Education-Public Safety-Transportation
Central Massachusetts Regional Planning Commission

LEICESTER



www.cmrpc.org



Source: MassDOT, MassGIS, WRTA

Traffic Safety

NB : Color Coded # is Regional Rank

† TRAFFIC SAFETY HIGHLIGHTS							
Auto Crash Clusters 2006-2008	Community	Sum Crash	Fatal Crash	Injury Crash	¹ PDO Crash	² EPDO	³ HSIP Eligible
MAIN ST / PLEASANT ST	LEICESTER	21	0	5	16	41	Yes
PAXTON ST / MARSHALL ST	LEICESTER	17	0	5	12	37	Yes
MAIN ST	LEICESTER	23	0	2	21	31	Yes
Pedestrian Crash Clusters 2006-2008							
NONE	LEICESTER	0	0	0	0	0	0
Bike Crash Clusters 2006-2008							
NONE	LEICESTER	0	0	0	0	0	0
Total Auto Crashes 2006-2008	LEICESTER	678	5	163	510	1,375	
Total Pedestrian Crashes 2006-2008	LEICESTER	1	0	1	0	5	
Total Bike Crashes 2006-2008	LEICESTER	1	1	0	0	10	

¹ PDO - Property Damage Only

² EPDO - Equivalent Property Damage Only weighted by fatal crashes = 10, injury crashes = 5, PDO = 1

³ HSIP - Highway Safety Improvement Program (MA)

† Excluding Interstate Highways

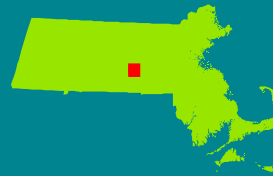
Source : Mass DOT Highway

Community Snapshot

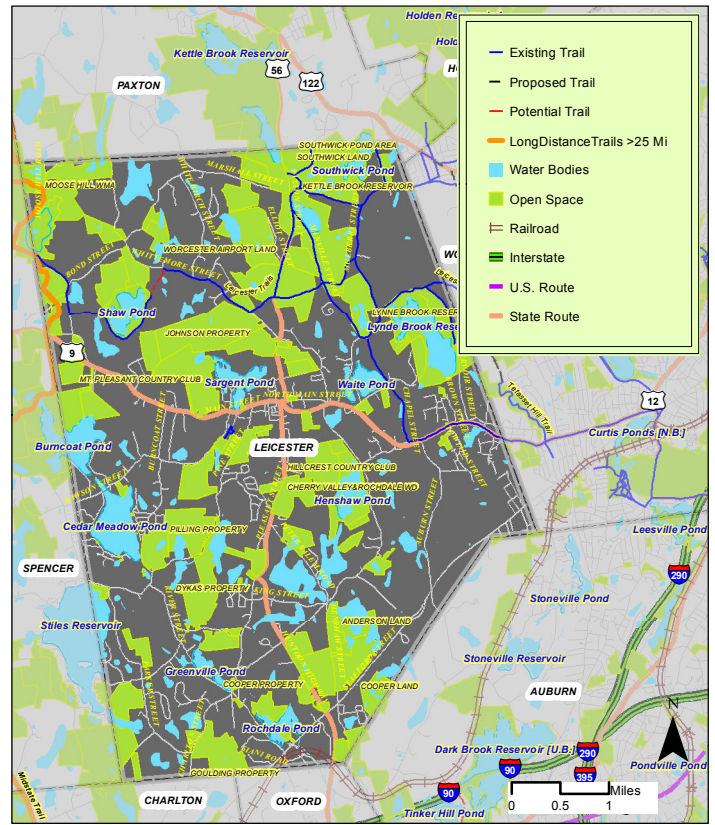
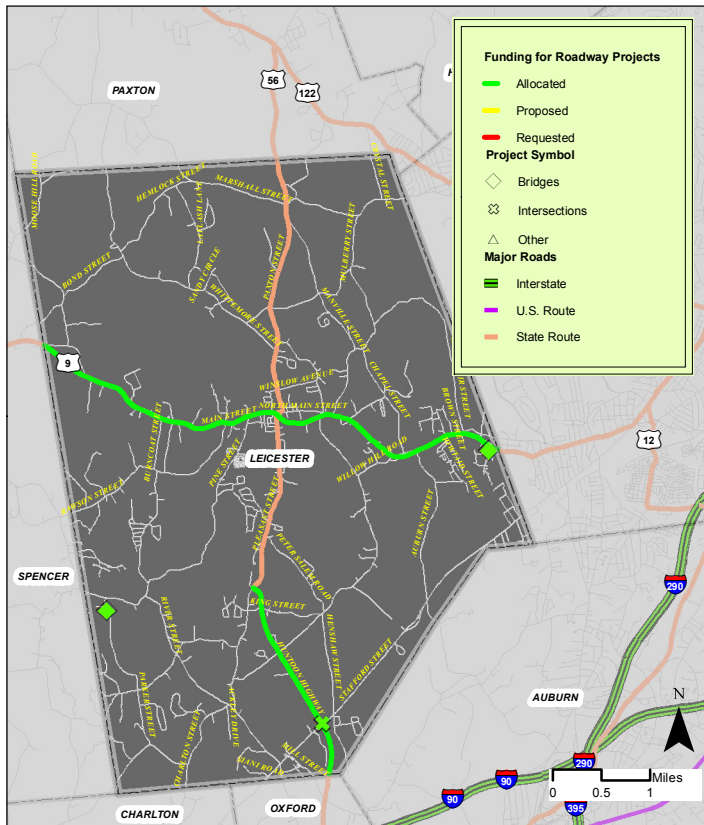
Information depicted on these maps is for planning purposes.
Data obtained from MassDOT, MassGIS, CMRPC
Produced by the GIS Center :
Central Massachusetts Regional Planning Commission.
2 Washington Sq, Union Station, 2nd Floor, Worcester,
MA 01604-4016

This snapshot contains data on:
Population-Economy-Housing-Education-Public Safety -Transportation
Central Massachusetts Regional Planning Commission

LEICESTER



www.cmrpc.org



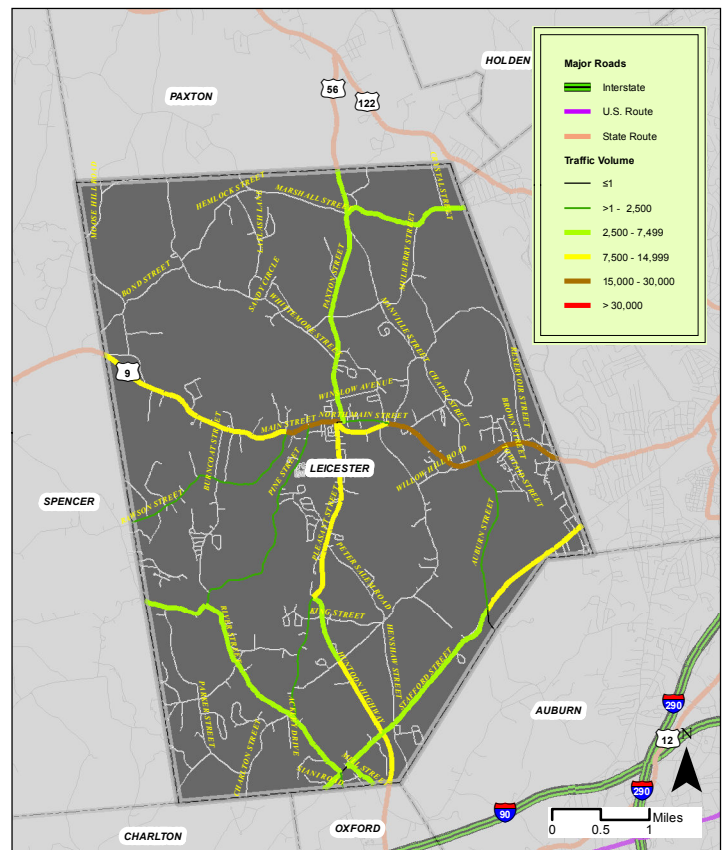
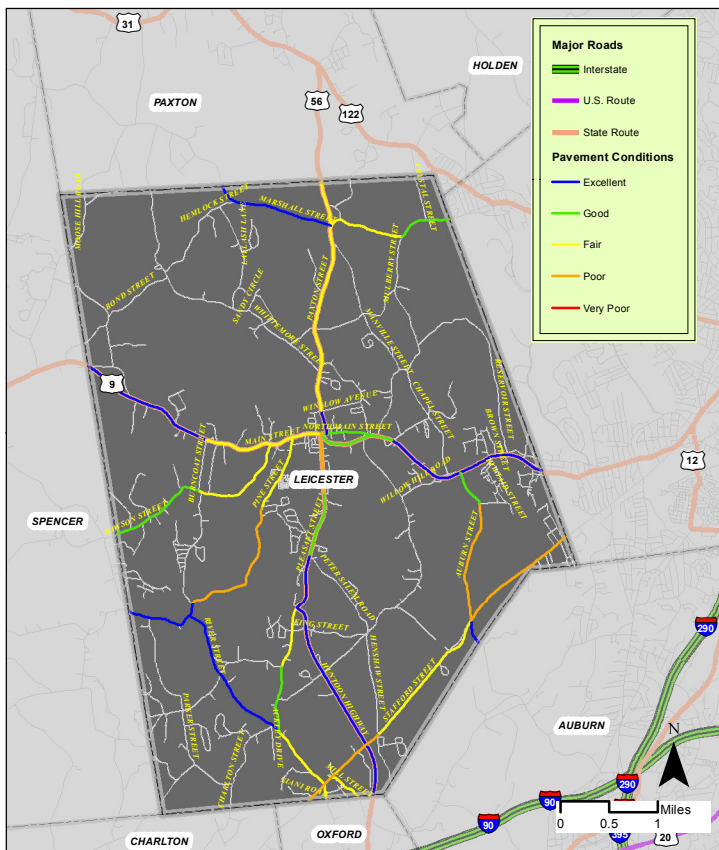
Roadway Improvement Projects -TIP*

*TIP-Transportation Improvement Program

Source: CMRPC

Trails

Source: CMRPC



Pavement Condition

Source: CMRPC

Traffic Volume

Source: CMRPC