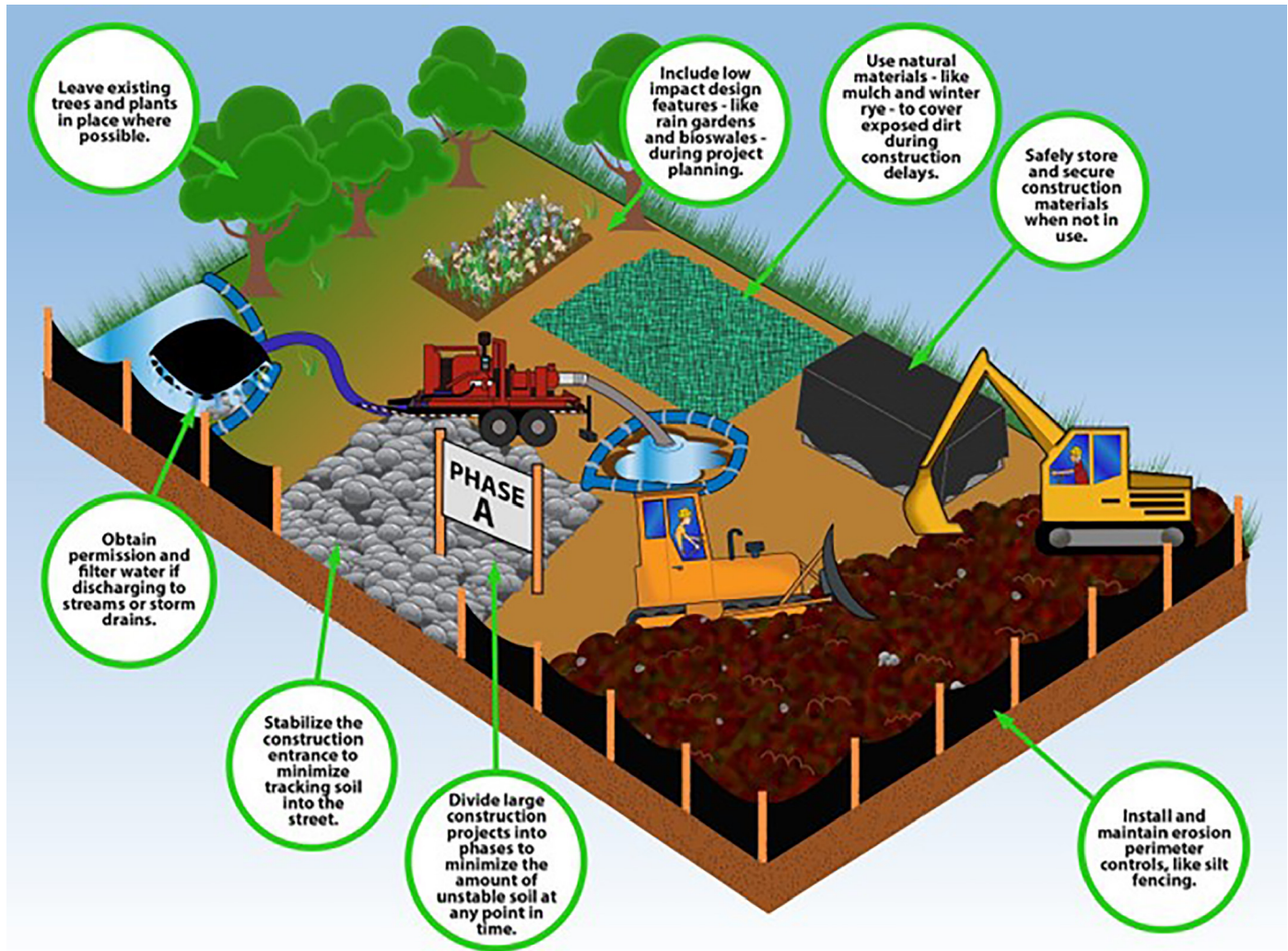


Attention Developers and Contractors!

Plan Ahead to Prevent Pollution: Tips to Reduce Stormwater Runoff During Construction



Contact the EPA and the Town of Leicester to make sure you have the proper permits and that you are in compliance with all Town of Leicester by-laws and ordinances associated with construction site runoff control and site inspections before beginning construction.



Construction companies can do their part to keep Leicester's waterways clean.